

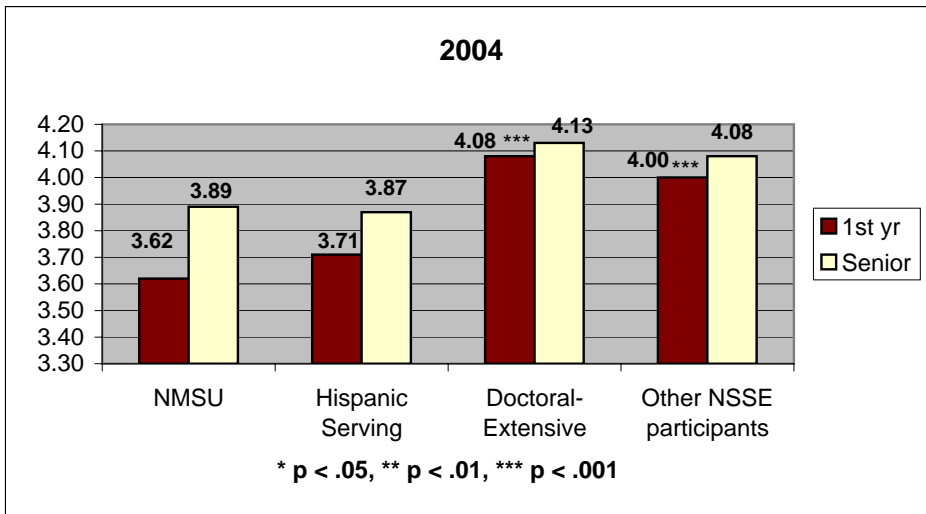
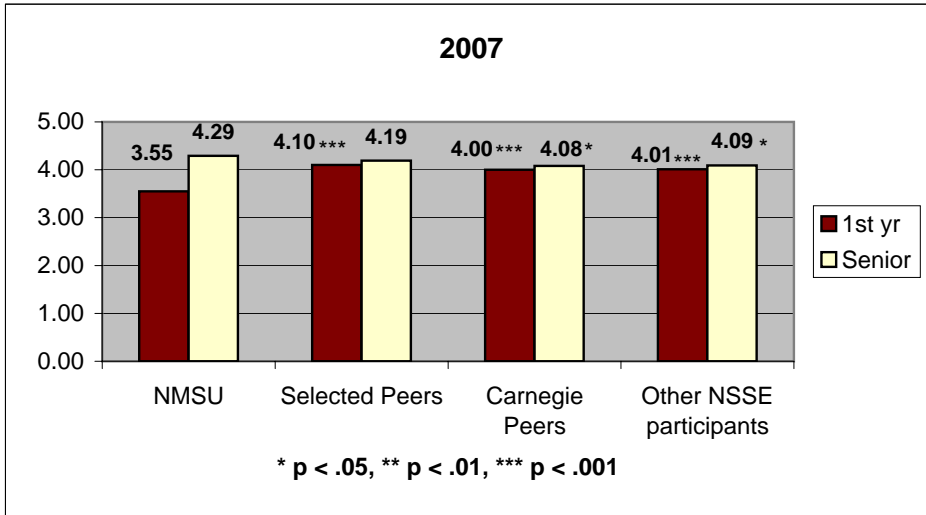
## National Survey of Student Engagement

### 9. Time Usage

About how many hours do you spend in a typical 7-day week doing each of the following?

**1 = 0 hrs/wk, 2 = 1-5 hrs/wk, 3 = 6-10 hrs/wk,  
4 = 11-15 hrs/wk, 5 = 16-20 hrs/wk, 6 = 21-25 hrs/wk,  
7 = 26-30 hrs/wk, 8 = more than 30 hrs/wk**

*Preparing for class (studying, reading, writing, doing homework or lab work, analyzing data, rehearsing, and other academic activities)*



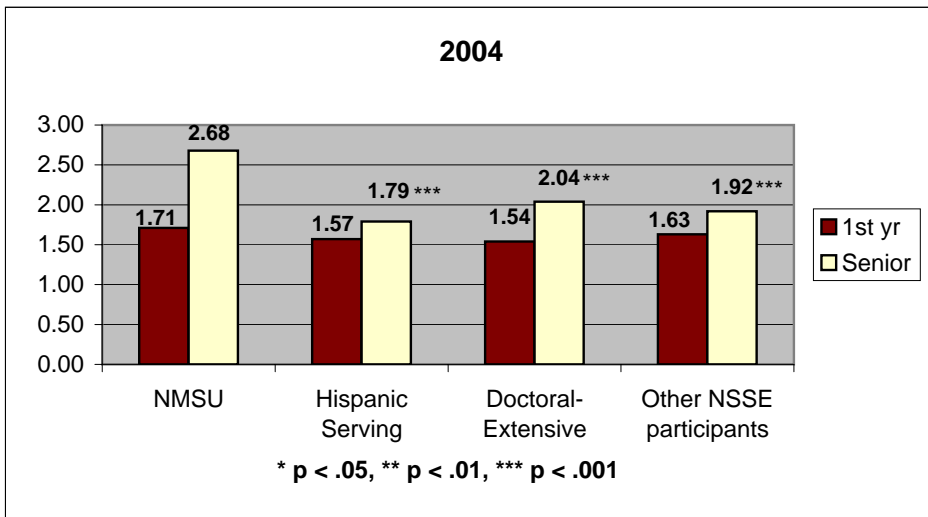
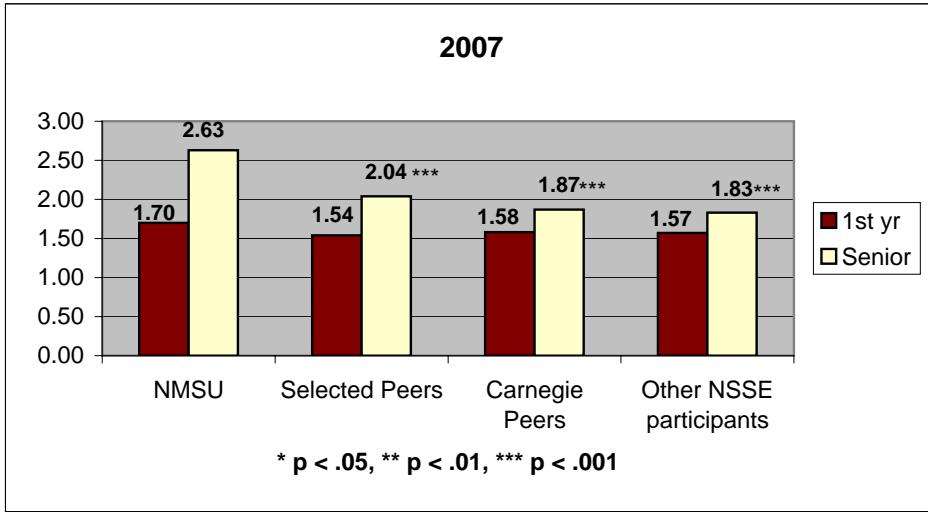
## National Survey of Student Engagement

### 9. Time Usage

About how many hours do you spend in a typical 7-day week doing each of the following?

1 = 0 hrs/wk, 2 = 1-5 hrs/wk, 3 = 6-10 hrs/wk,  
 4 = 11-15 hrs/wk, 5 = 16-20 hrs/wk, 6 = 21-25 hrs/wk,  
 7 = 26-30 hrs/wk, 8 = more than 30 hrs/wk

Working for pay on campus:



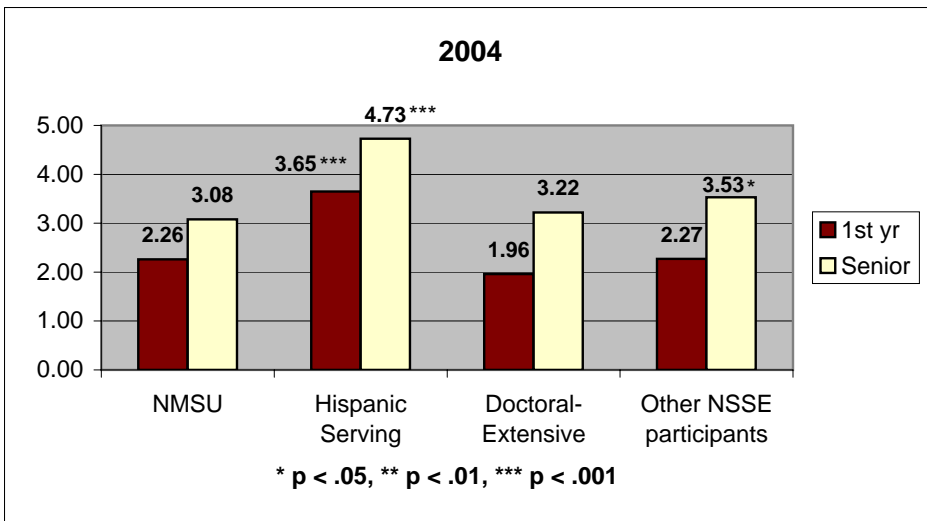
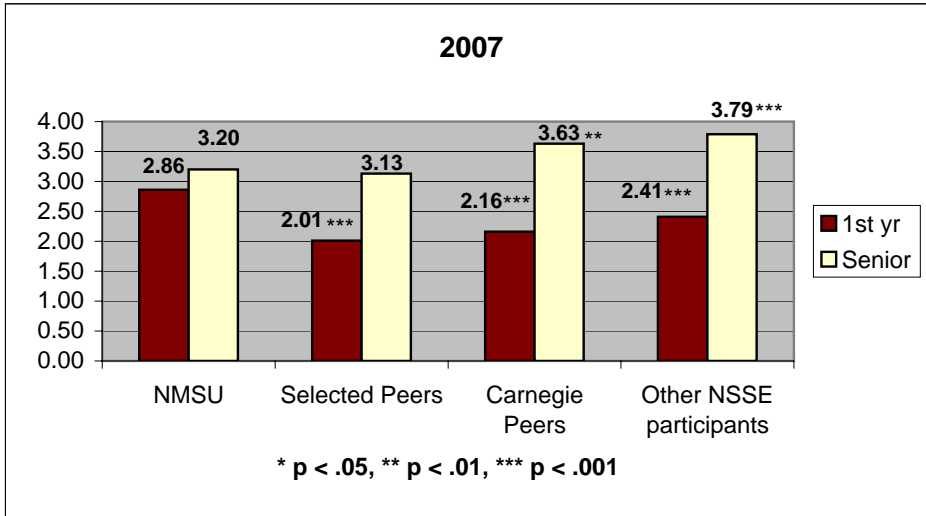
## National Survey of Student Engagement

### 9. Time Usage

About how many hours do you spend in a typical 7-day week doing each of the following?

**1 = 0 hrs/wk, 2 = 1-5 hrs/wk, 3 = 6-10 hrs/wk,  
4 = 11-15 hrs/wk, 5 = 16-20 hrs/wk, 6 = 21-25 hrs/wk,  
7 = 26-30 hrs/wk, 8 = more than 30 hrs/wk**

Working for pay off campus:



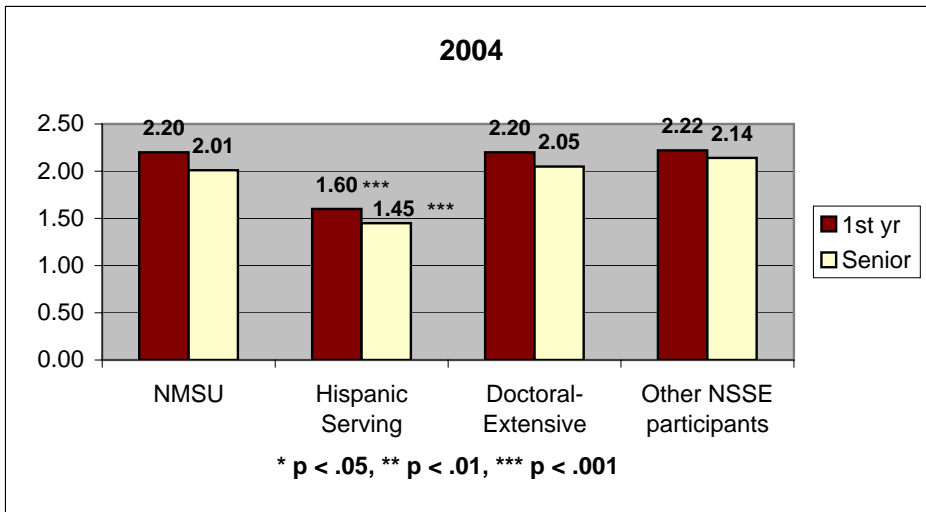
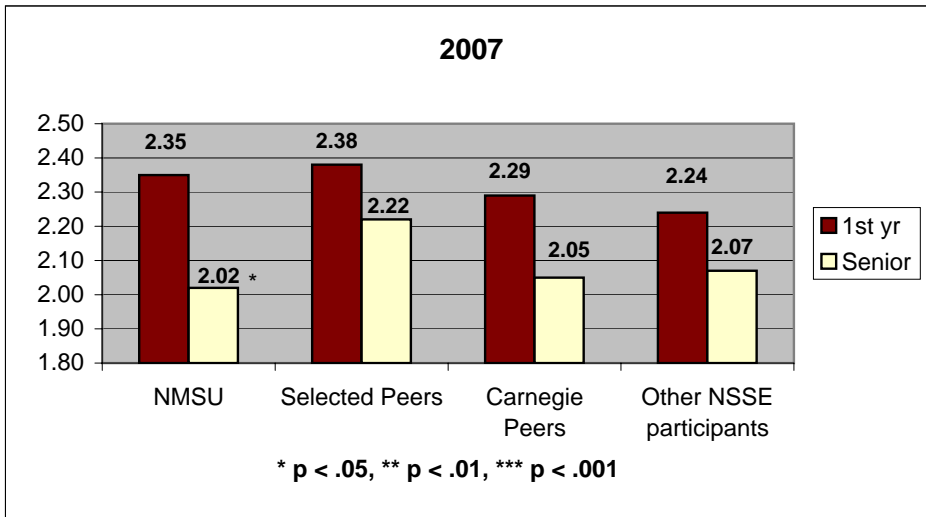
## National Survey of Student Engagement

### 9. Time Usage

About how many hours do you spend in a typical 7-day week doing each of the following?

**1 = 0 hrs/wk, 2 = 1-5 hrs/wk, 3 = 6-10 hrs/wk,  
4 = 11-15 hrs/wk, 5 = 16-20 hrs/wk, 6 = 21-25 hrs/wk,  
7 = 26-30 hrs/wk, 8 = more than 30 hrs/wk**

*Participating in co-curricular activities (organizations, campus publications, student government, fraternity or sorority, intercollegiate or intramural sports, etc.):*



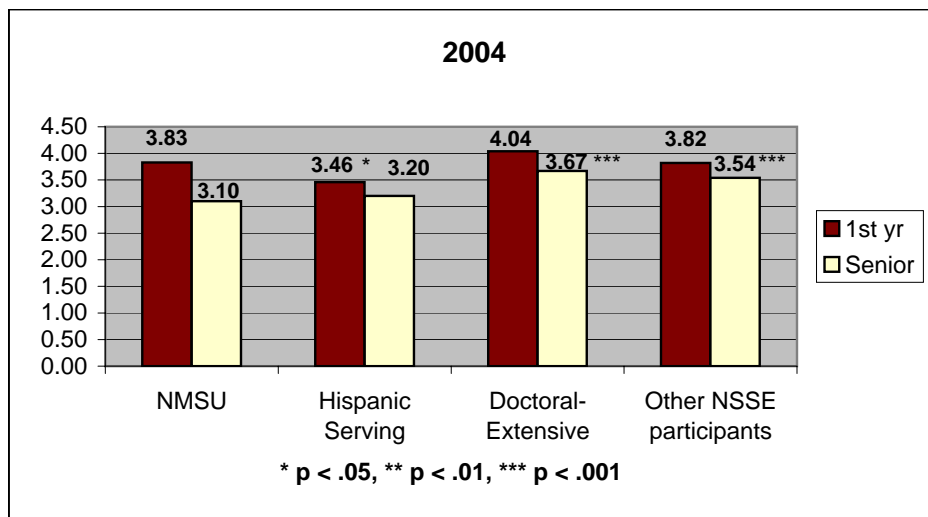
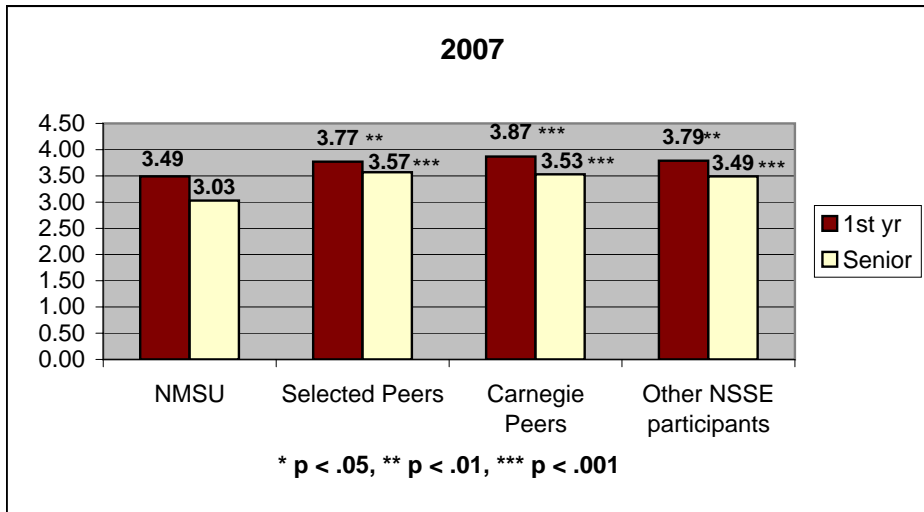
## National Survey of Student Engagement

### 9. Time Usage

About how many hours do you spend in a typical 7-day week doing each of the following?

**1 = 0 hrs/wk, 2 = 1-5 hrs/wk, 3 = 6-10 hrs/wk,  
4 = 11-15 hrs/wk, 5 = 16-20 hrs/wk, 6 = 21-25 hrs/wk,  
7 = 26-30 hrs/wk, 8 = more than 30 hrs/wk**

*Relaxing and socializing (watching TV, partying, etc.):*



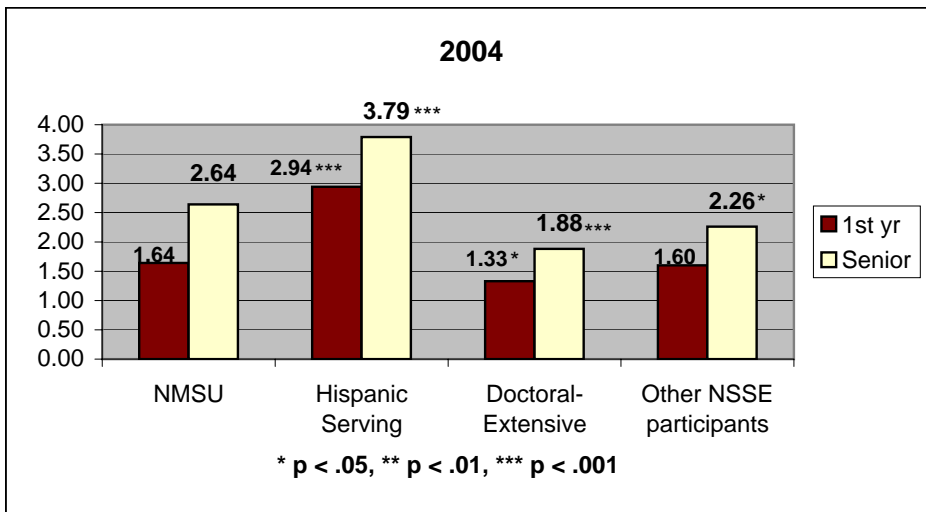
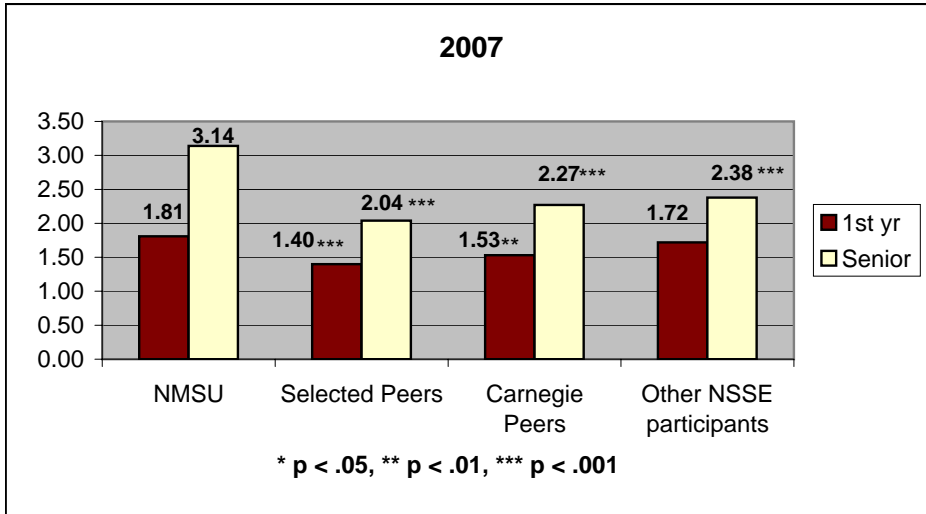
## National Survey of Student Engagement

### 9. Time Usage

About how many hours do you spend in a typical 7-day week doing each of the following?

**1 = 0 hrs/wk, 2 = 1-5 hrs/wk, 3 = 6-10 hrs/wk,  
4 = 11-15 hrs/wk, 5 = 16-20 hrs/wk, 6 = 21-25 hrs/wk,  
7 = 26-30 hrs/wk, 8 = more than 30 hrs/wk**

*Providing care for dependents living with you (parents, children, spouse, etc.):*



## National Survey of Student Engagement

### 9. Time Usage

About how many hours do you spend in a typical 7-day week doing each of the following?

1 = 0 hrs/wk, 2 = 1-5 hrs/wk, 3 = 6-10 hrs/wk,  
 4 = 11-15 hrs/wk, 5 = 16-20 hrs/wk, 6 = 21-25 hrs/wk,  
 7 = 26-30 hrs/wk, 8 = more than 30 hrs/wk

Commuting to class (driving, walking, etc.):

