

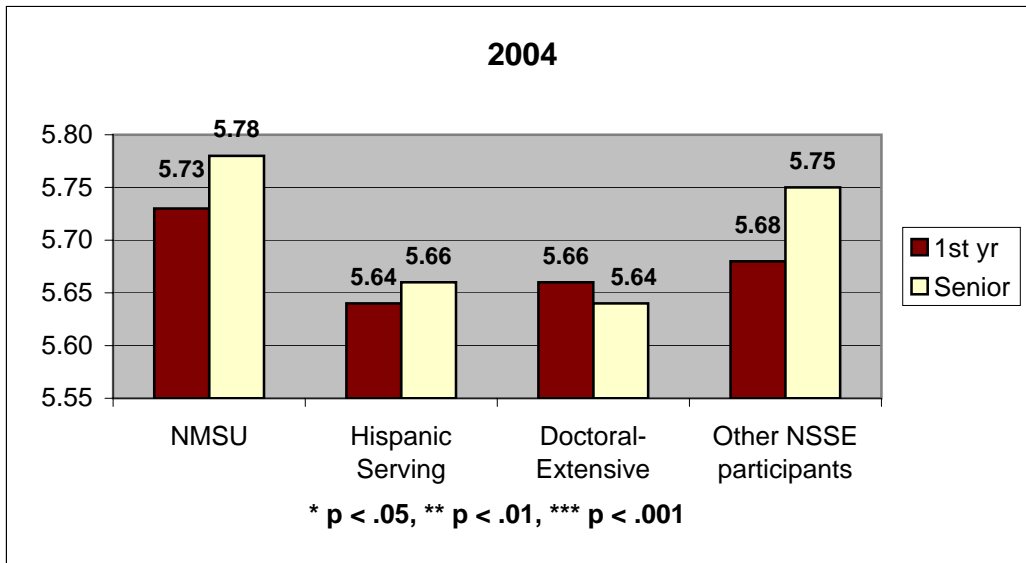
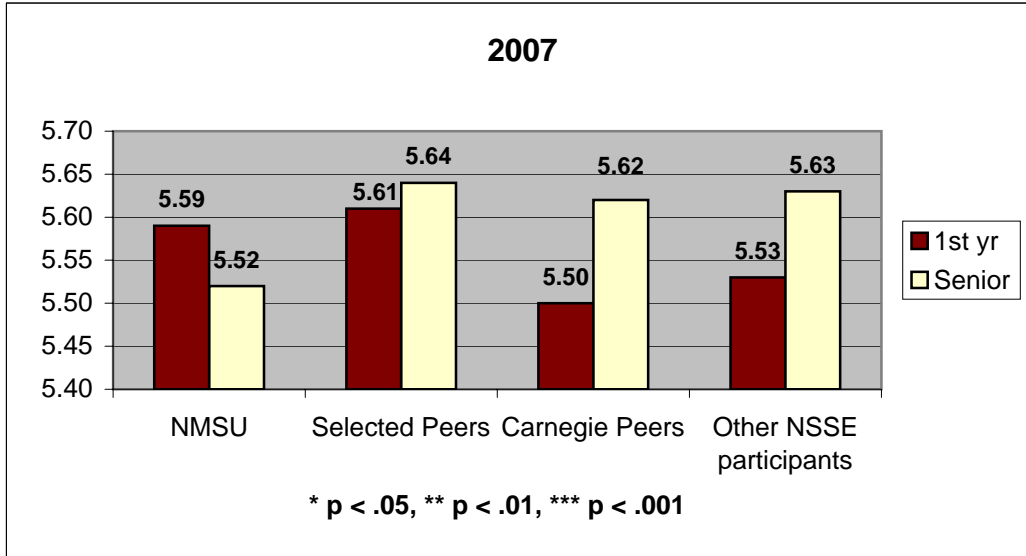
National Survey of Student Engagement

8. Quality of Relationships

Mark the box that best represents the quality of your relationships with people at your institution.

1 = unfriendly, unsupportive, sense of alienation to
7 = friendly, supportive, sense of belonging

Relationships with other students:



National Survey of Student Engagement

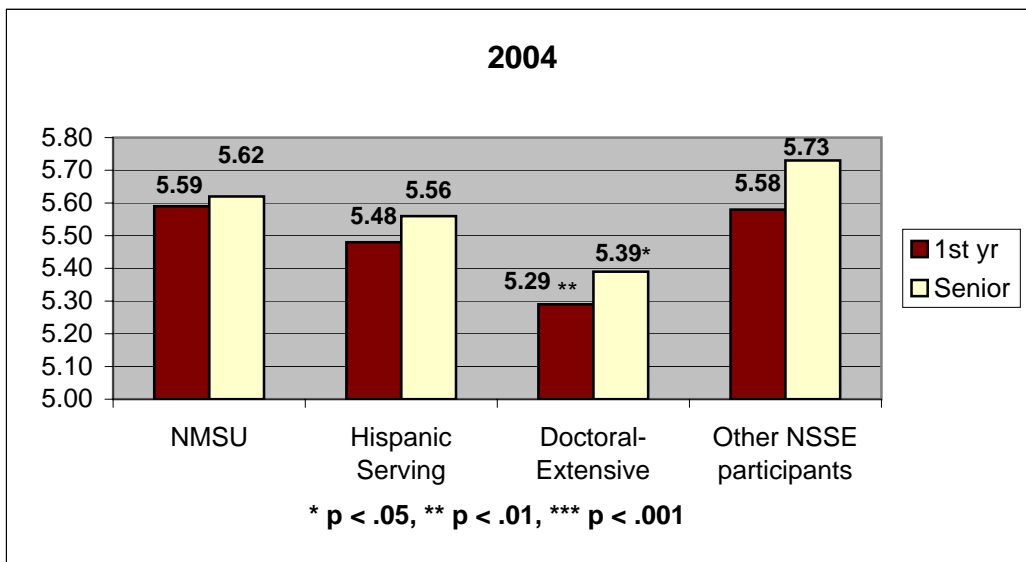
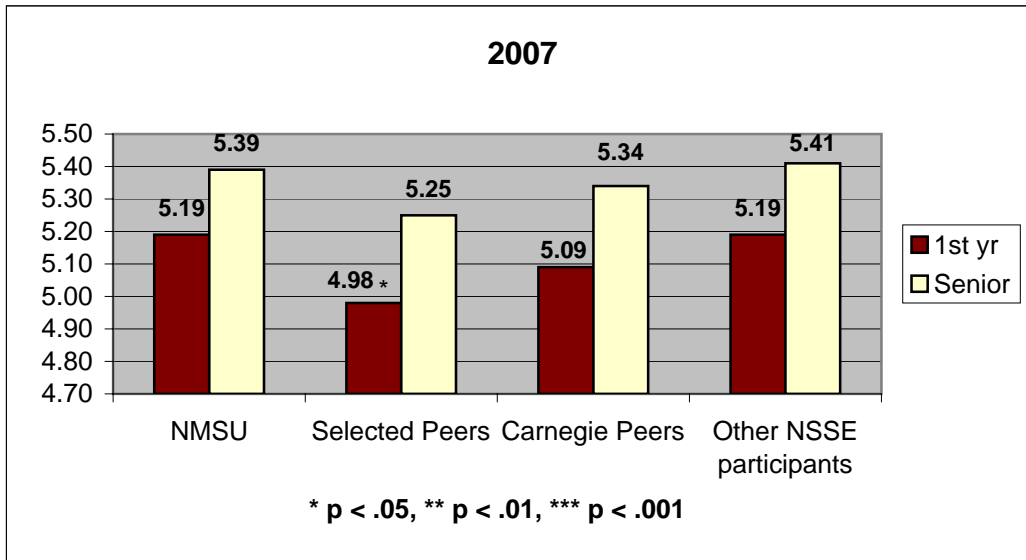
8. Quality of Relationships

Mark the box that best represents the quality of your relationships with people at your institution.

1 = unavailable, unhelpful, unsympathetic to

7 = available, helpful, sympathetic

Relationships with faculty members:



National Survey of Student Engagement

8. Quality of Relationships

Mark the box that best represents the quality of your relationships with people at your institution.

1 = unhelpful, inconsiderate, rigid to

7 = helpful, considerate, flexible

Relationships with administrative personnel and offices:

