

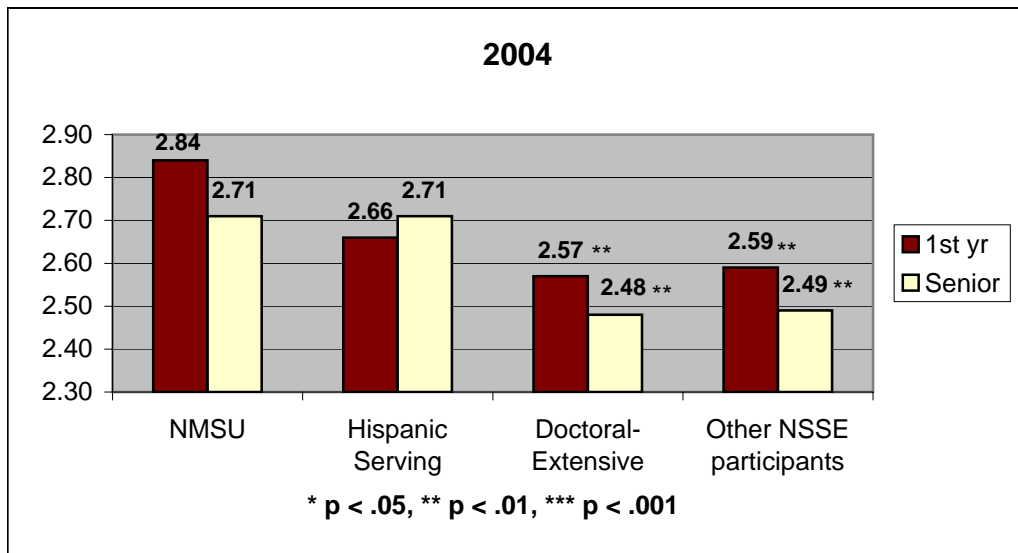
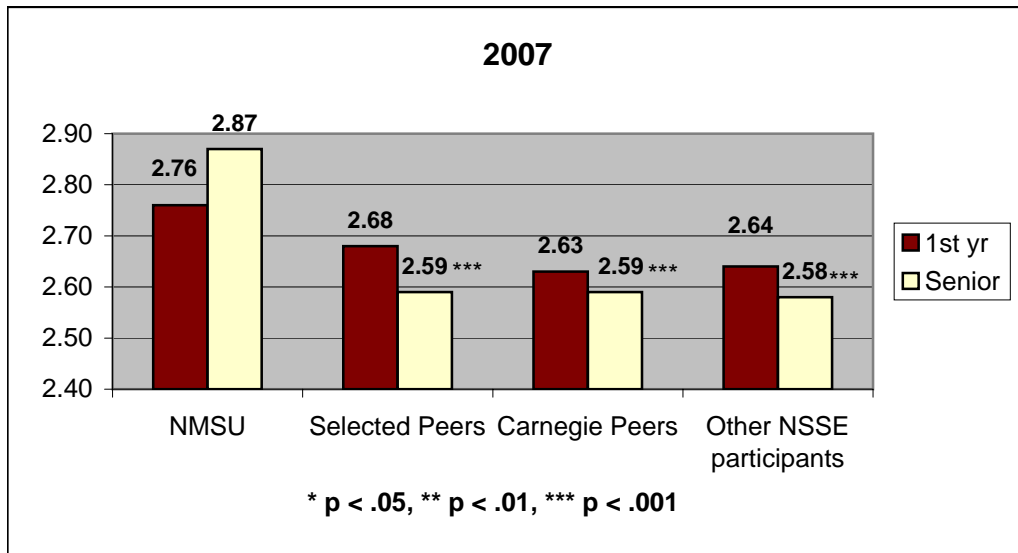
National Survey of Student Engagement

4. Problem Sets

In a typical week, how many homework problem sets do you complete?

1 = none, 2 = 1-2, 3 = 3-4, 4 = 5-6, 5 = more than 6

Number of problem sets that take you more than an hour to complete:



National Survey of Student Engagement

4. Problem Sets

In a typical week, how many homework problem sets do you complete?

1 = none, 2 = 1-2, 3= 3-4, 4 = 5-6, 5 = more than 6

Number of problem sets that take you less than an hour to complete:

