

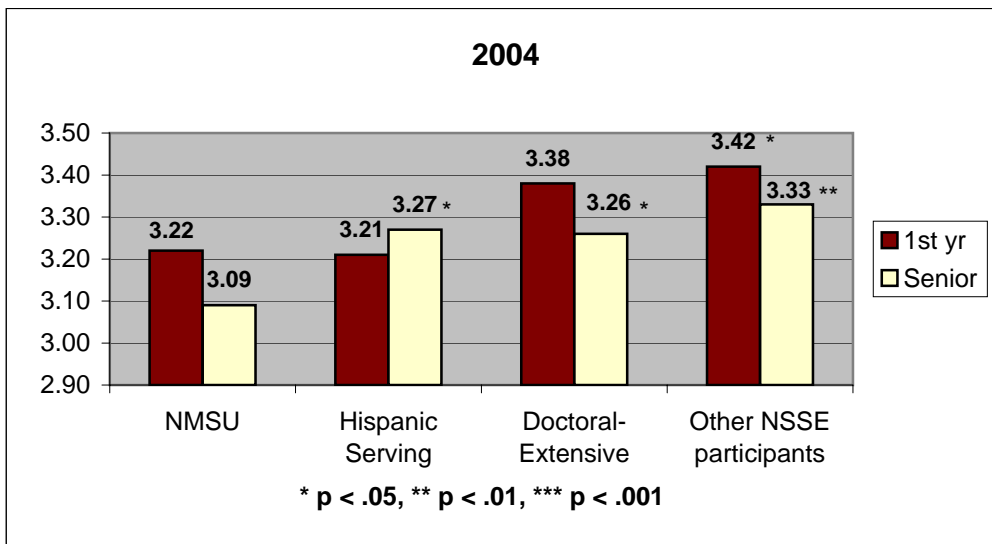
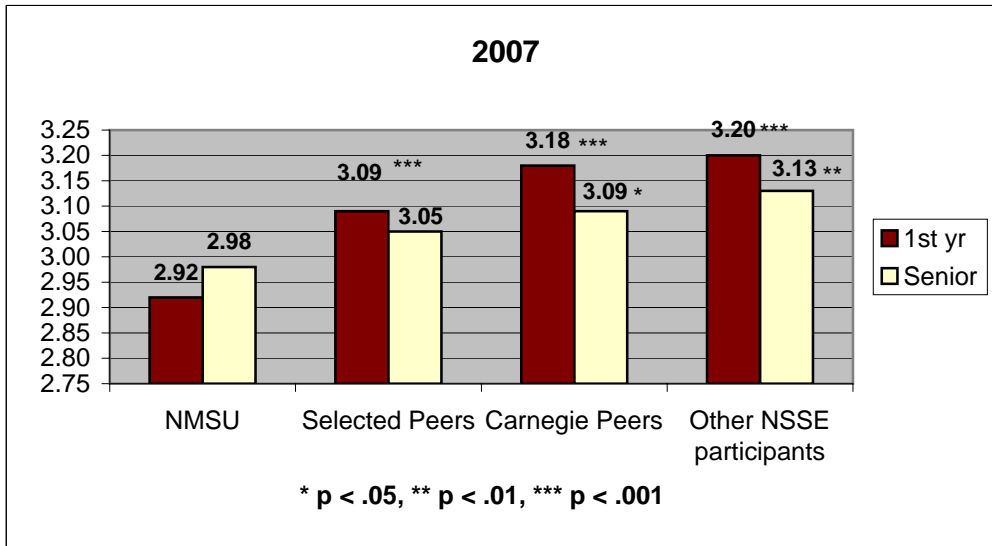
## National Survey of Student Engagement

### 3. Reading and Writing

During the current school year, about how much reading and writing have you done?

*1 = none, 2 = 1-4, 3= 5-10, 4 = 11-20, 5 = more than 20*

Number of assigned textbooks, books, or book-length packs of course reading:



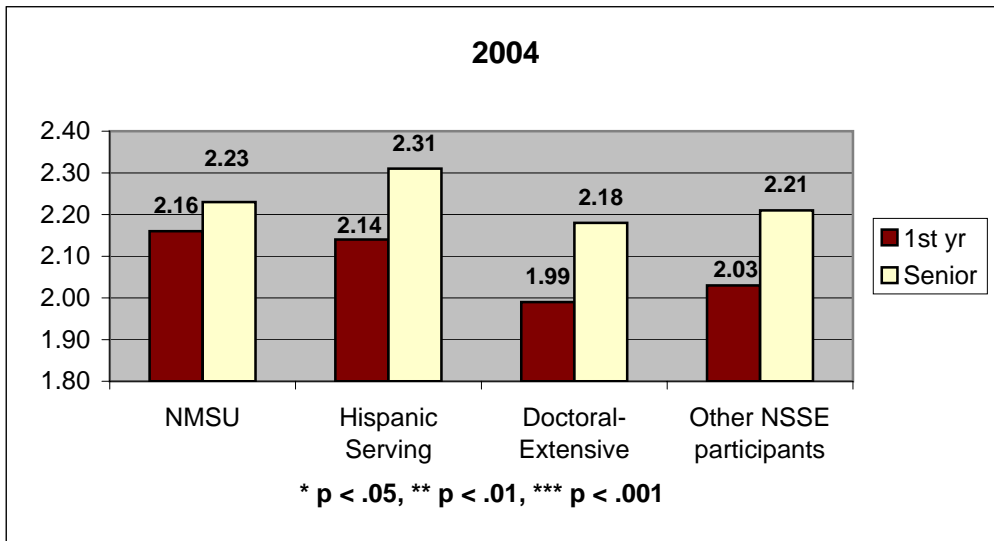
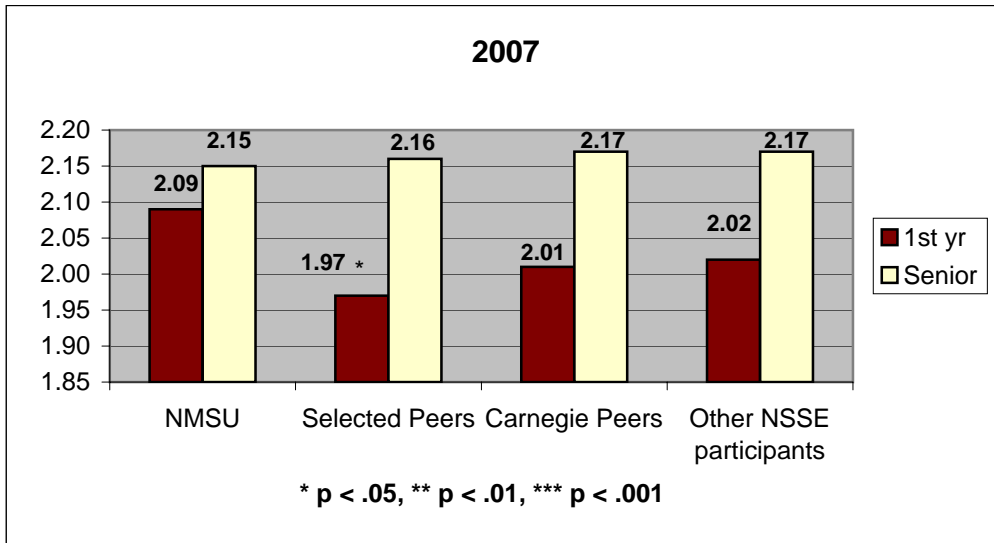
## National Survey of Student Engagement

### 3. Reading and Writing

During the current school year, about how much reading and writing have you done?

*1 = none, 2 = 1-4, 3= 5-10, 4 = 11-20, 5 = more than 20*

*Number of books read on your own (not assigned) for personal enjoyment or academic enrichment:*



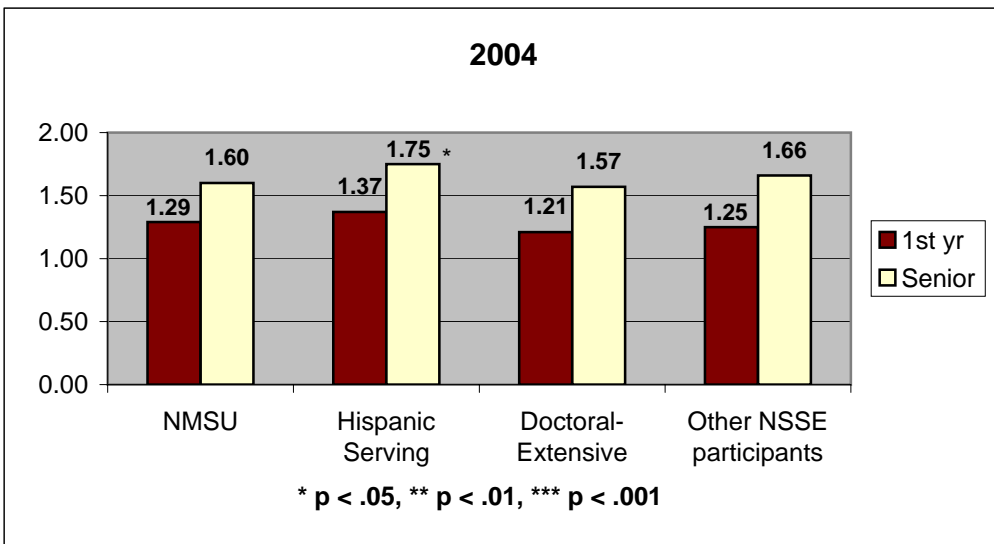
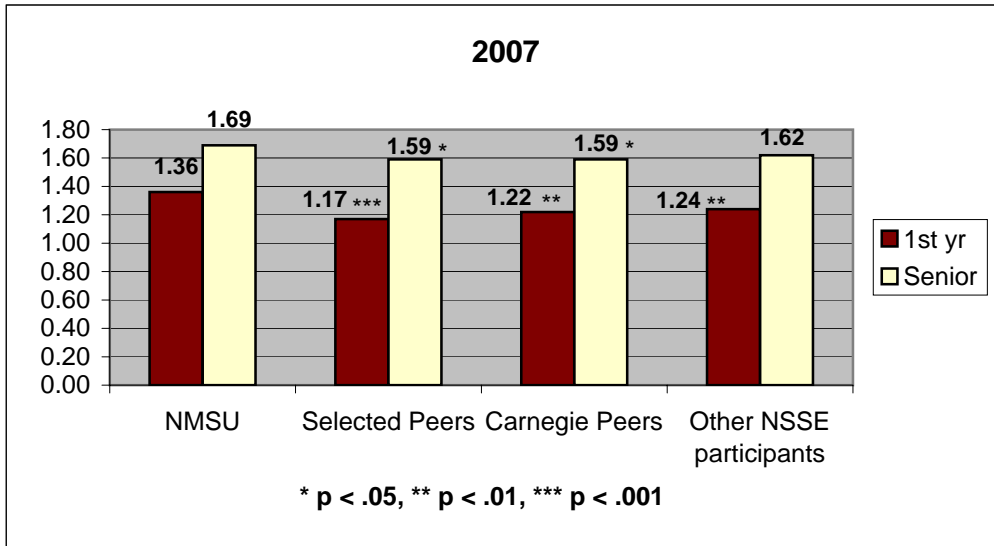
## National Survey of Student Engagement

### 3. Reading and Writing

During the current school year, about how much reading and writing have you done?

*1 = none, 2 = 1-4, 3= 5-10, 4 = 11-20, 5 = more than 20*

Number of written papers or reports of 20 pages or more:



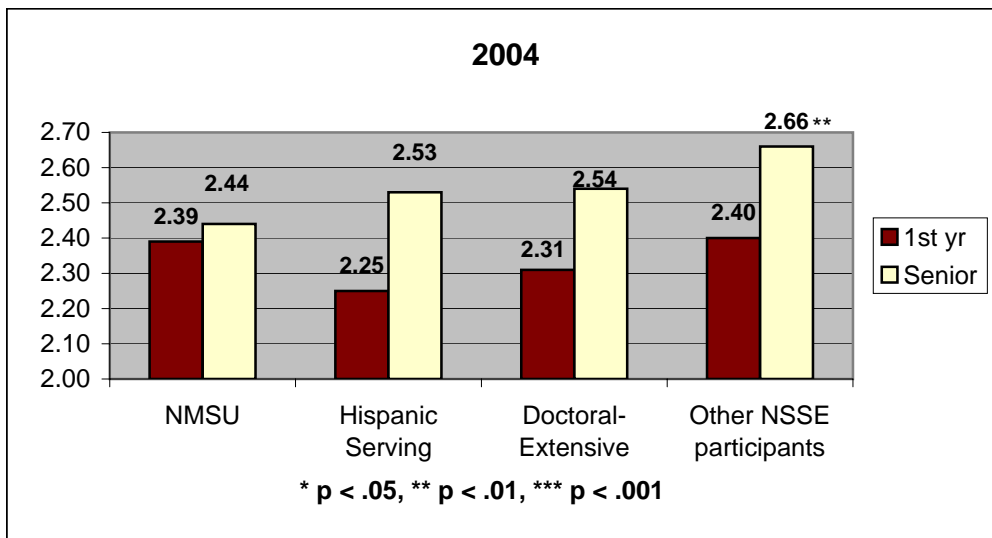
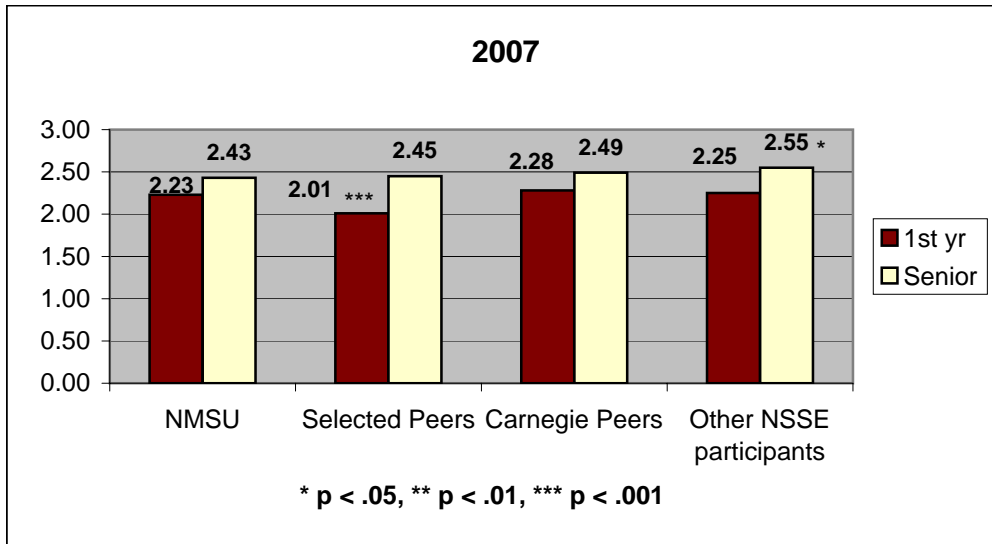
## National Survey of Student Engagement

### 3. Reading and Writing

During the current school year, about how much reading and writing have you done?

*1 = none, 2 = 1-4, 3= 5-10, 4 = 11-20, 5 = more than 20*

Number of written papers or reports between 5 and 19 pages:



## National Survey of Student Engagement

### 3. Reading and Writing

During the current school year, about how much reading and writing have you done?

*1 = none, 2 = 1-4, 3= 5-10, 4 = 11-20, 5 = more than 20*

Number of written pages or reports of fewer than 5 pages:

