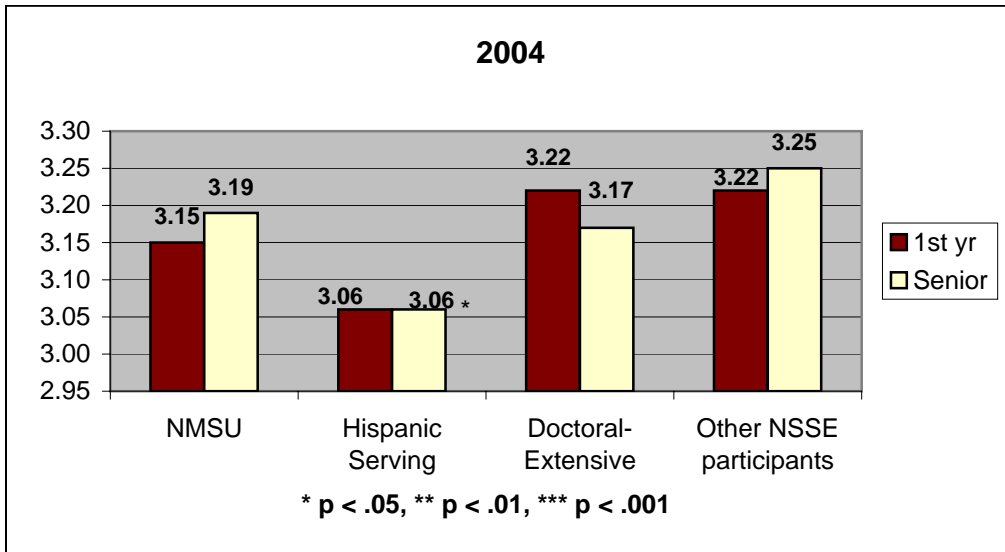
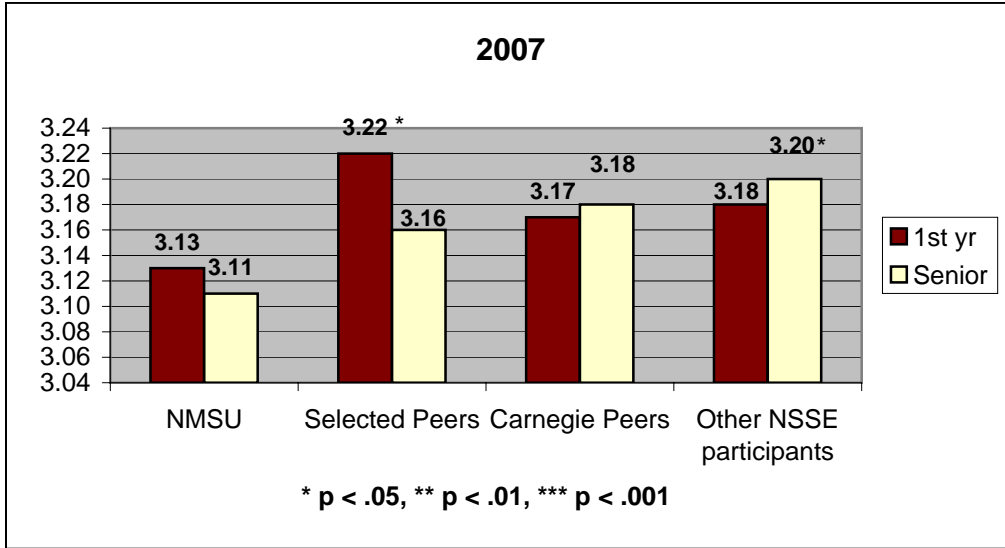


National Survey of Student Engagement

13. Satisfaction

1 = poor, 2 = fair, 3 = good, 4 = excellent

How would you evaluate your entire educational experience at your institution?



National Survey of Student Engagement

13. Satisfaction

1 = poor, 2 = fair, 3 = good, 4 = excellent

If you could start over again, would you go to the same institution you are now attending?

