

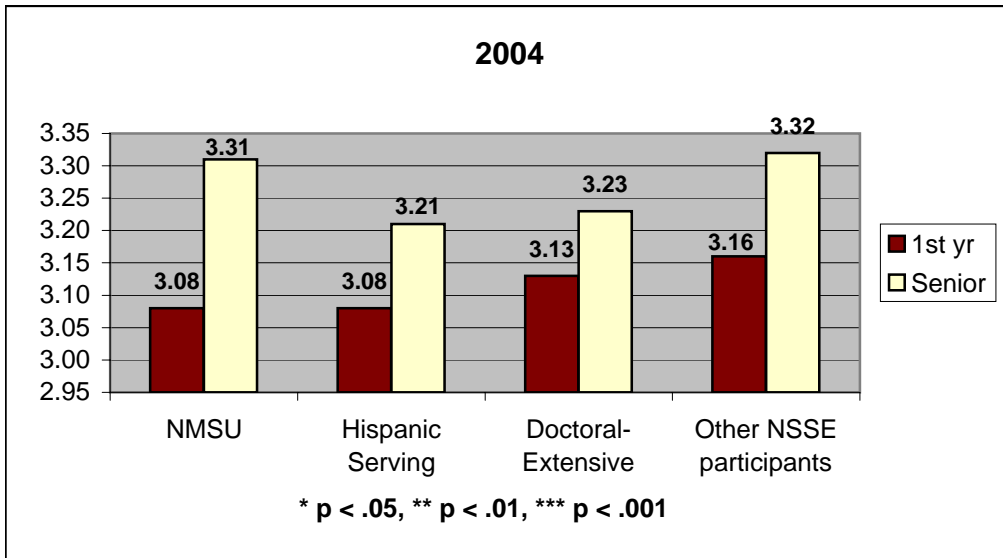
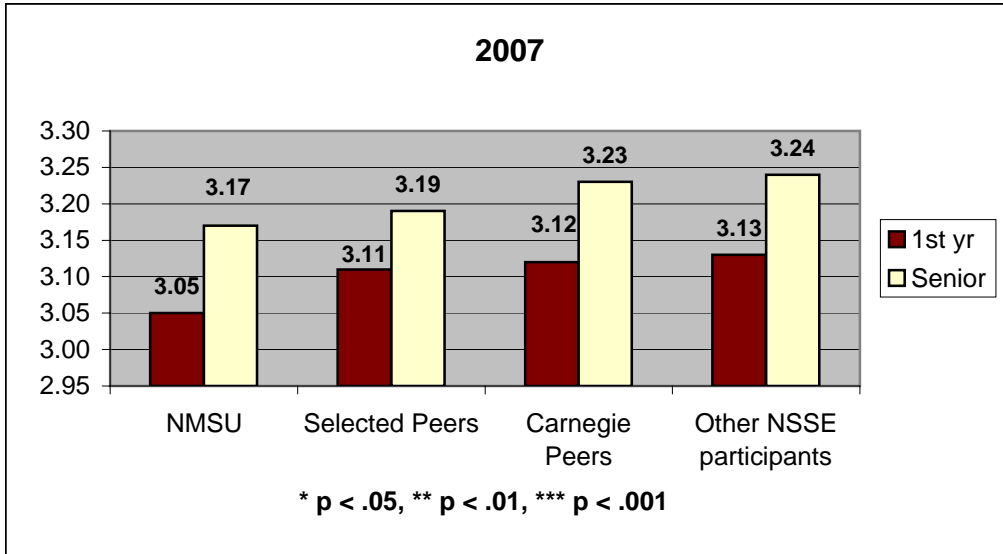
National Survey of Student Engagement

11. Educational and Personal Growth

To what extent has your experience at this institution contributed to your knowledge, skills, and personal development in the following areas?

1 = very little, 2 = some, 3 = quite a bit, 4 = very much

Acquiring a broad general education:



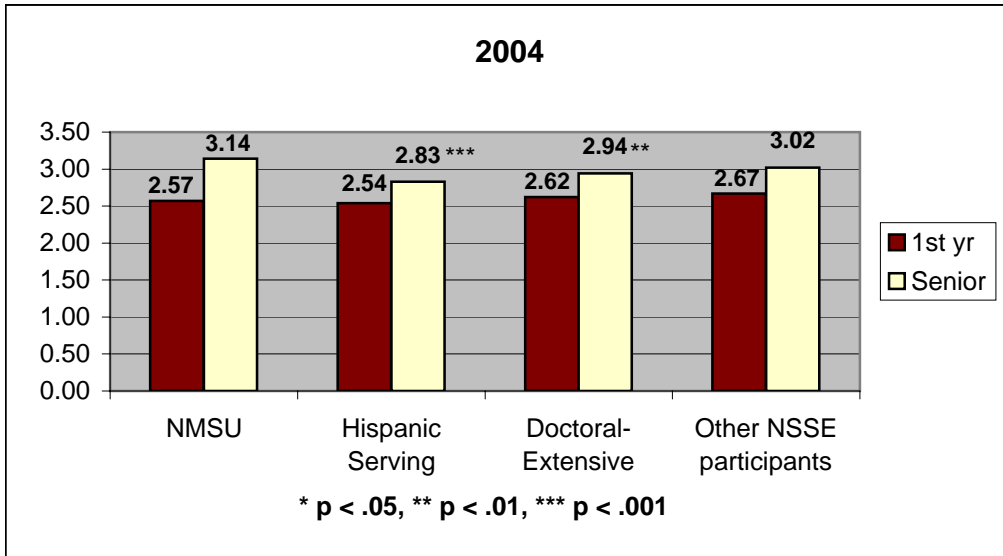
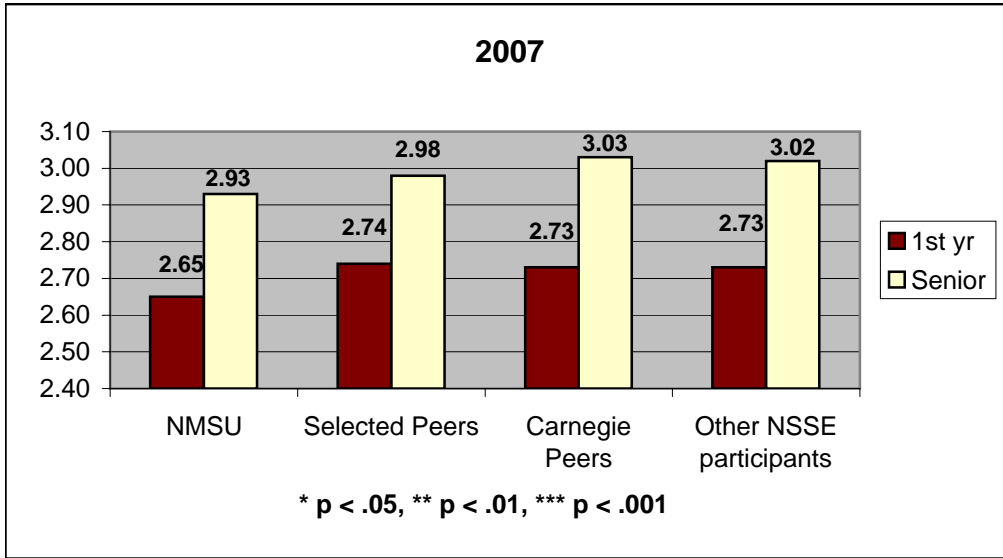
National Survey of Student Engagement

11. Educational and Personal Growth

To what extent has your experience at this institution contributed to your knowledge, skills, and personal development in the following areas?

1 = very little, 2 = some, 3 = quite a bit, 4 = very much

Acquiring job or work-related knowledge and skills:



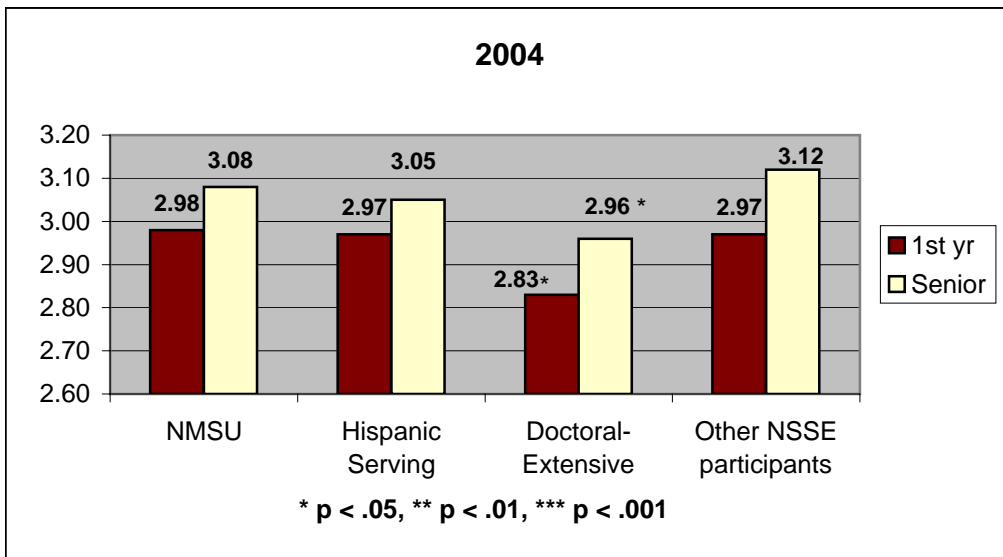
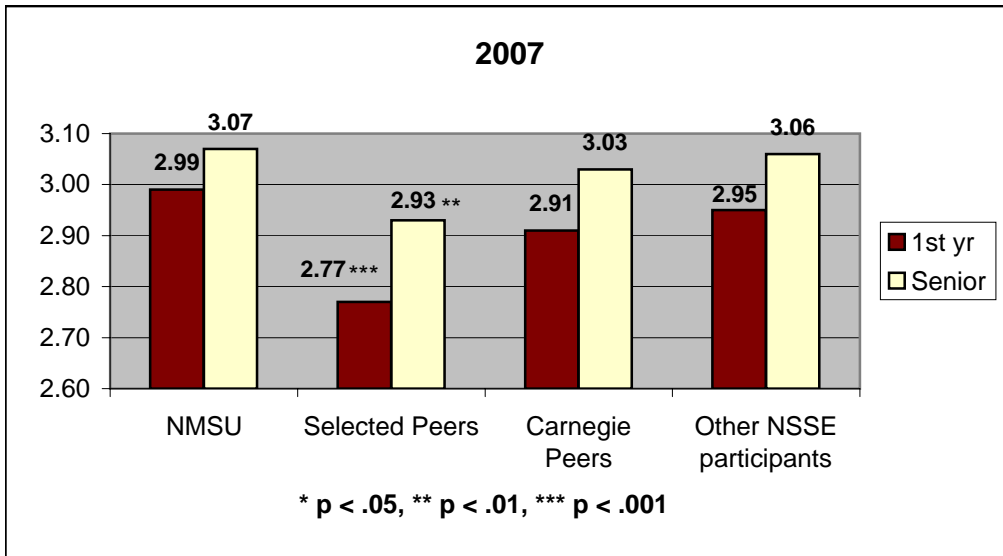
National Survey of Student Engagement

11. Educational and Personal Growth

To what extent has your experience at this institution contributed to your knowledge, skills, and personal development in the following areas?

1 = very little, 2 = some, 3 = quite a bit, 4 = very much

Writing clearly and effectively:



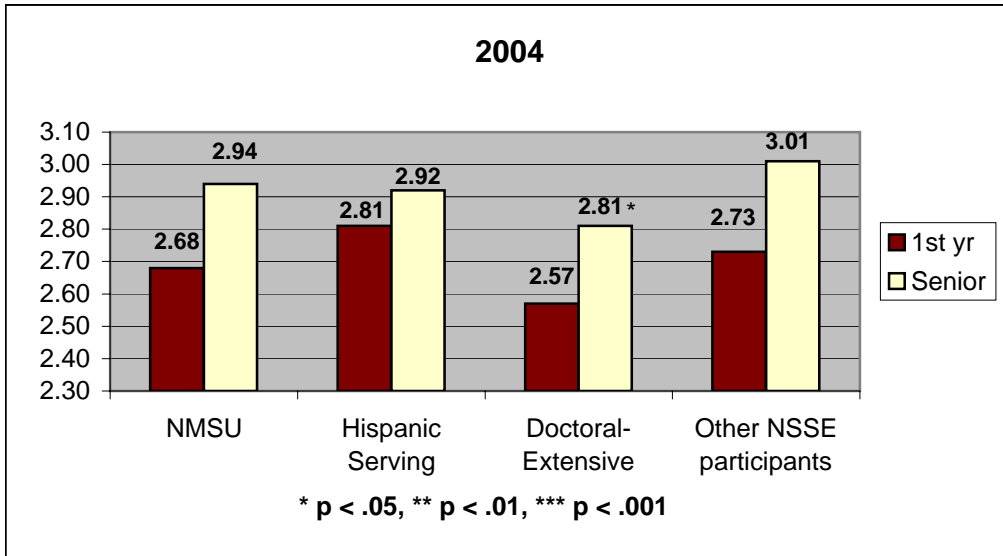
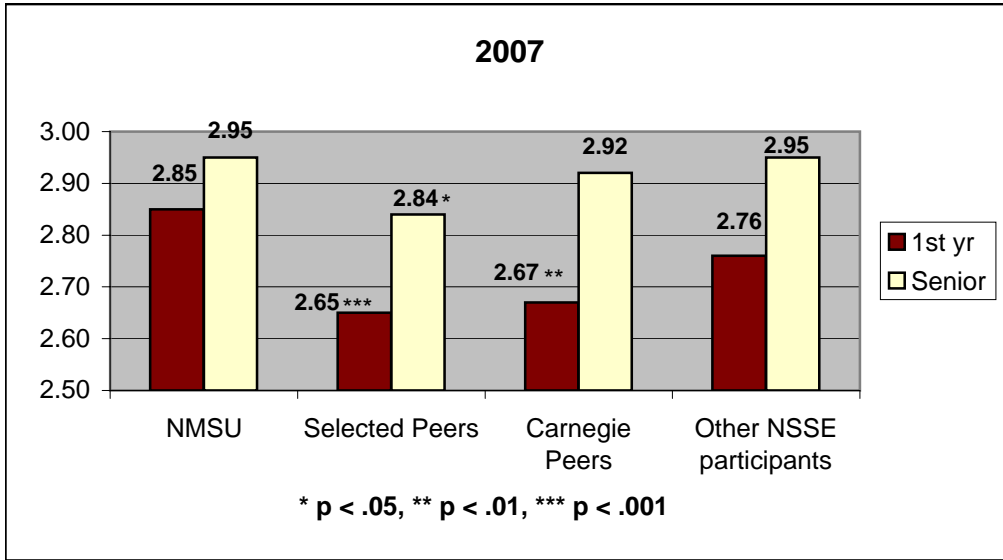
National Survey of Student Engagement

11. Educational and Personal Growth

To what extent has your experience at this institution contributed to your knowledge, skills, and personal development in the following areas?

1 = very little, 2 = some, 3 = quite a bit, 4 = very much

Speaking clearly and effectively:



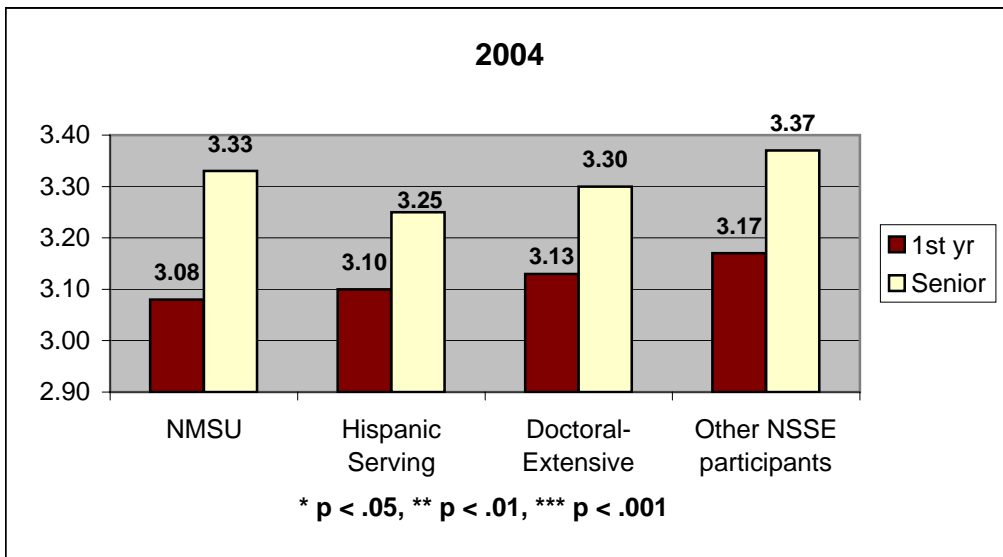
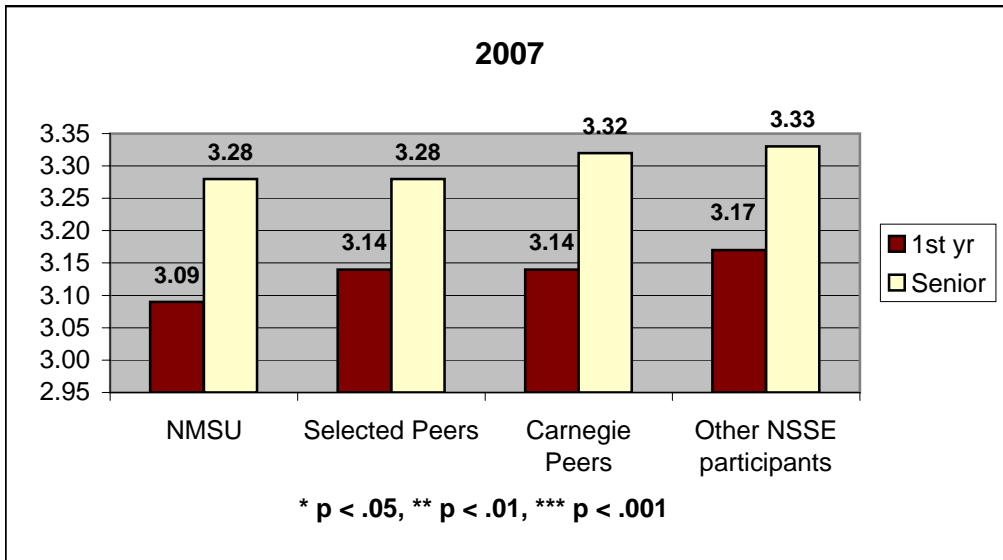
National Survey of Student Engagement

11. Educational and Personal Growth

To what extent has your experience at this institution contributed to your knowledge, skills, and personal development in the following areas?

1 = very little, 2 = some, 3 = quite a bit, 4 = very much

Thinking critically and analytically:



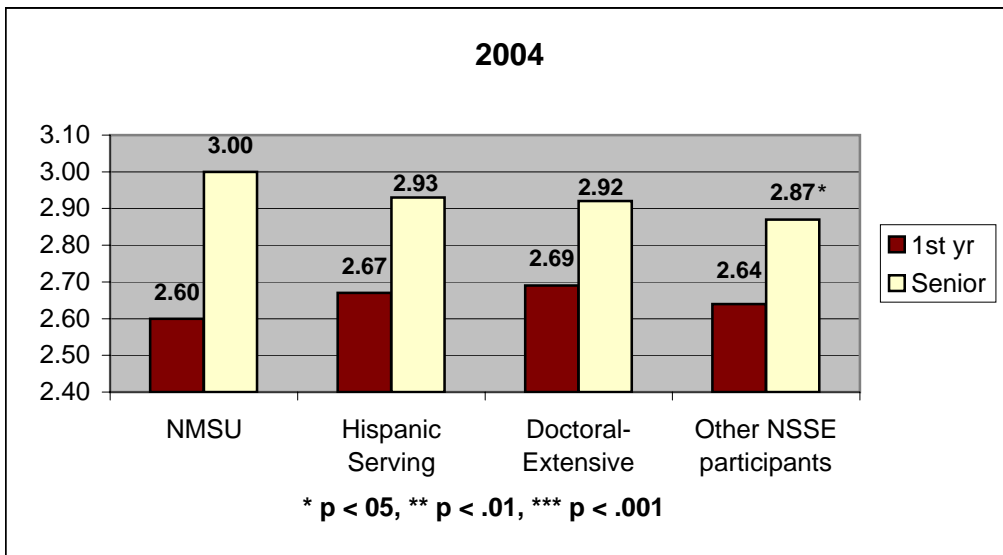
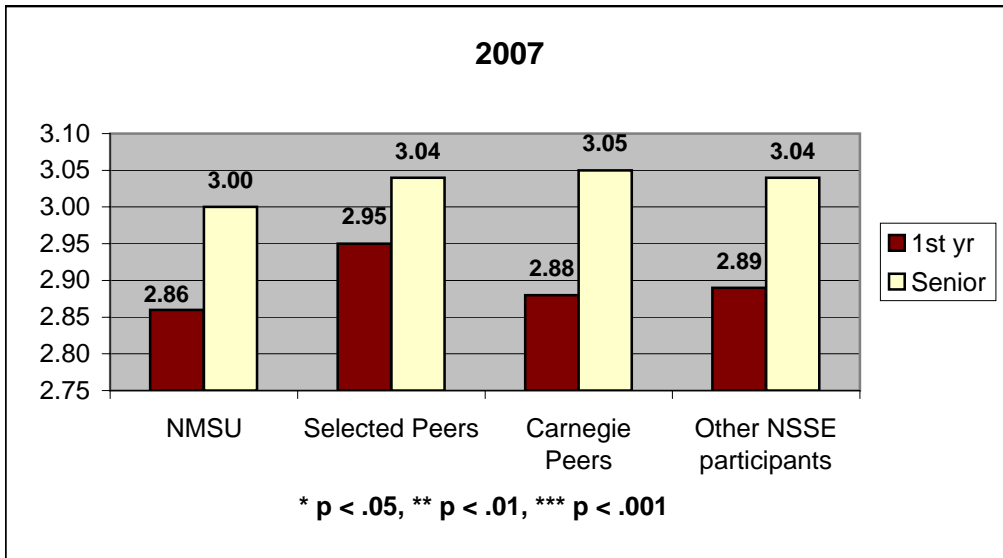
National Survey of Student Engagement

11. Educational and Personal Growth

To what extent has your experience at this institution contributed to your knowledge, skills, and personal development in the following areas?

1 = very little, 2 = some, 3 = quite a bit, 4 = very much

Analyzing quantitative problems:



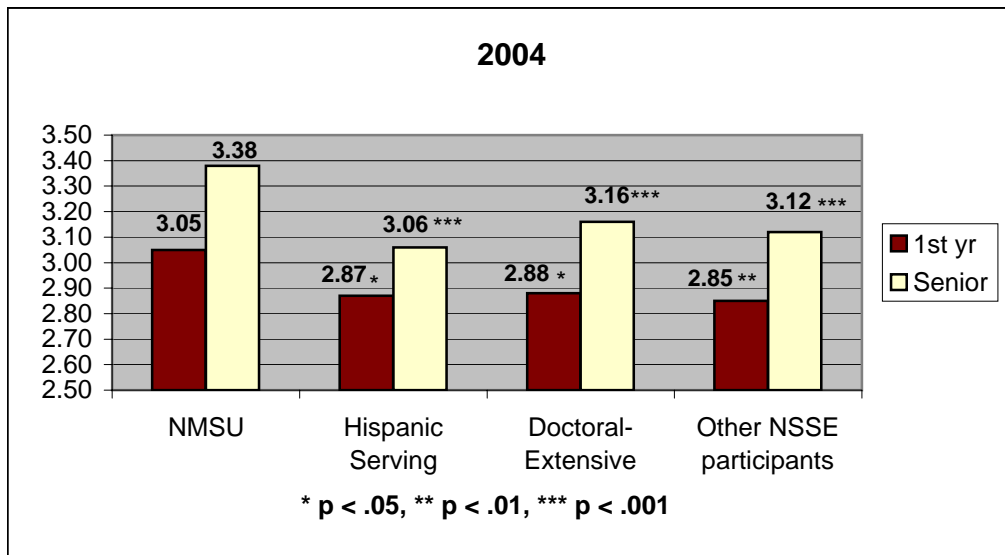
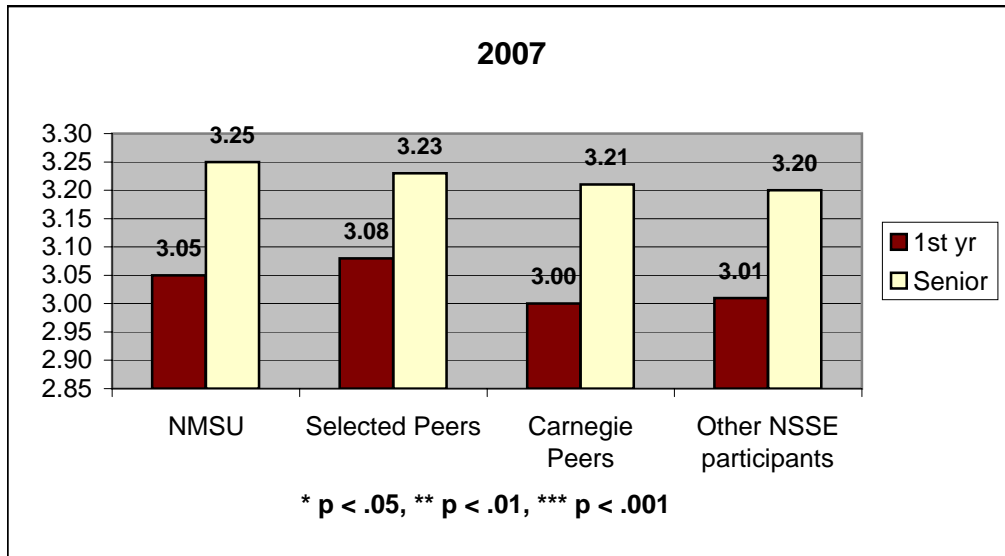
National Survey of Student Engagement

11. Educational and Personal Growth

To what extent has your experience at this institution contributed to your knowledge, skills, and personal development in the following areas?

1 = very little, 2 = some, 3 = quite a bit, 4 = very much

Using computing and information technology:



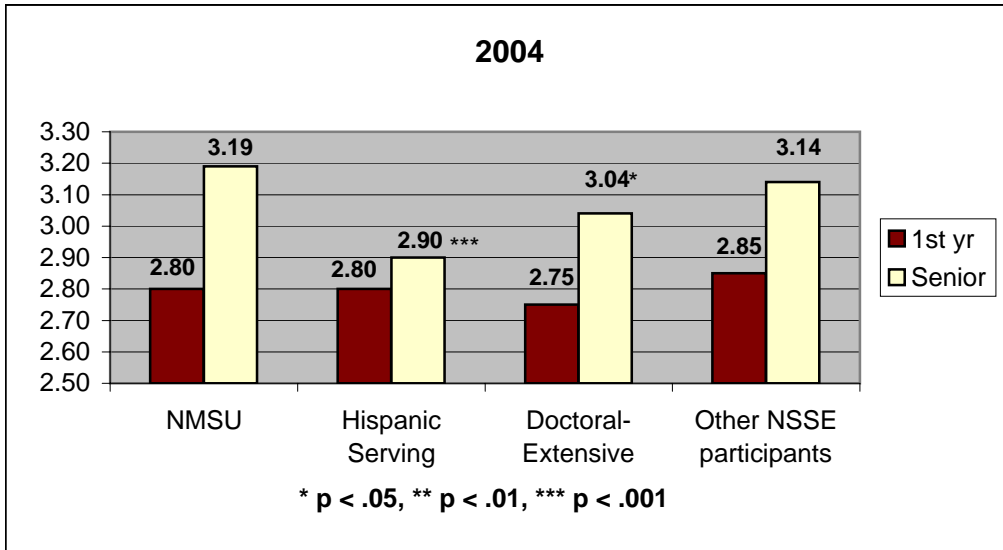
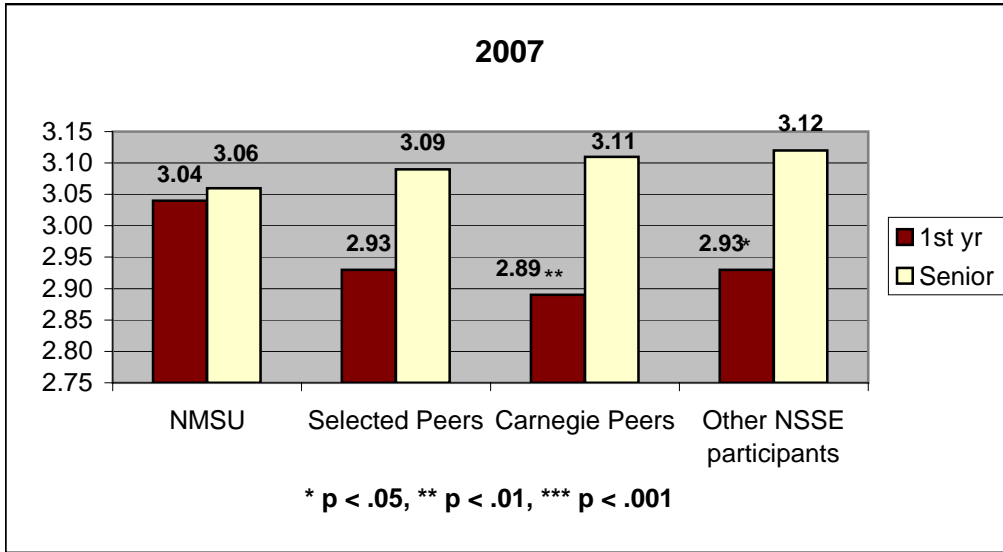
National Survey of Student Engagement

11. Educational and Personal Growth

To what extent has your experience at this institution contributed to your knowledge, skills, and personal development in the following areas?

1 = very little, 2 = some, 3 = quite a bit, 4 = very much

Working effectively with others:



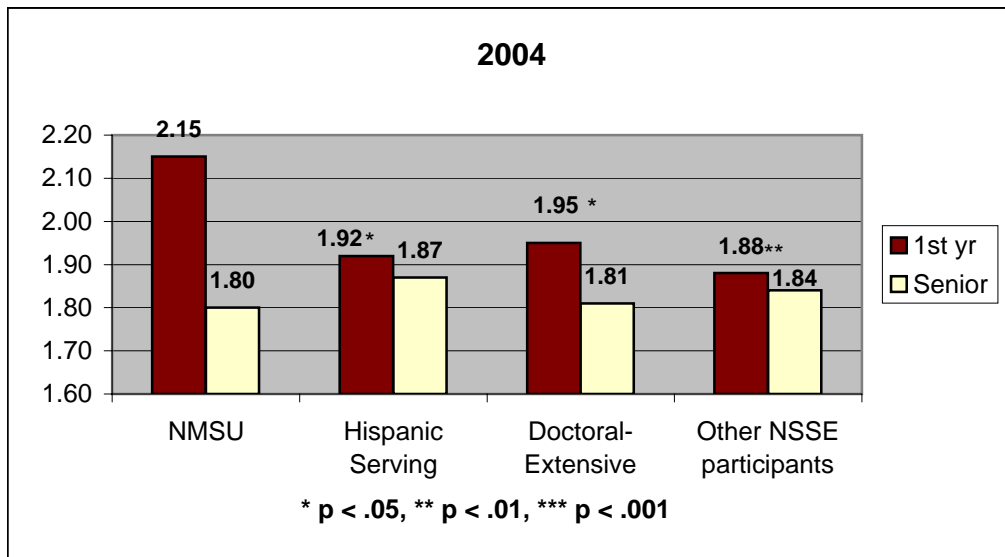
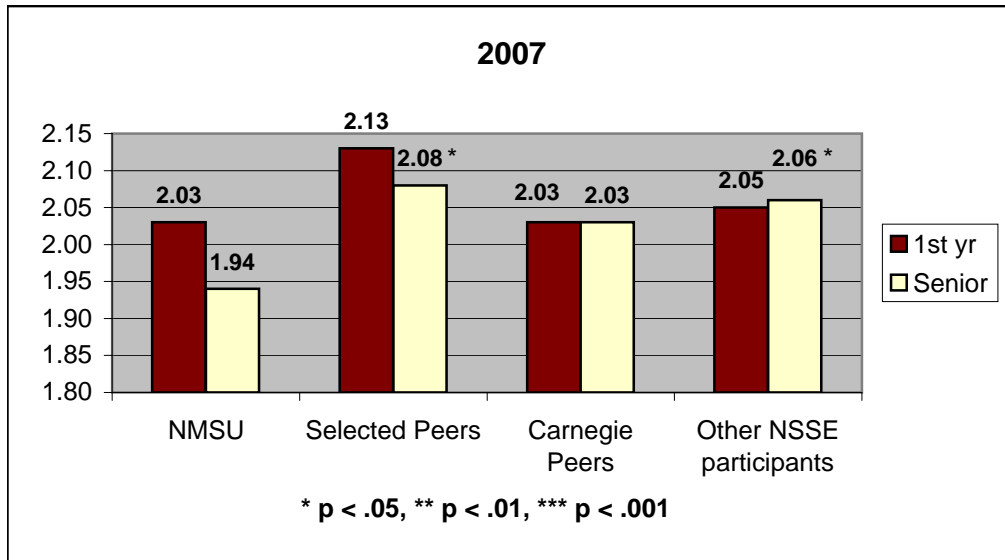
National Survey of Student Engagement

11. Educational and Personal Growth

To what extent has your experience at this institution contributed to your knowledge, skills, and personal development in the following areas?

1 = very little, 2 = some, 3 = quite a bit, 4 = very much

Voting in local, state, or national elections:



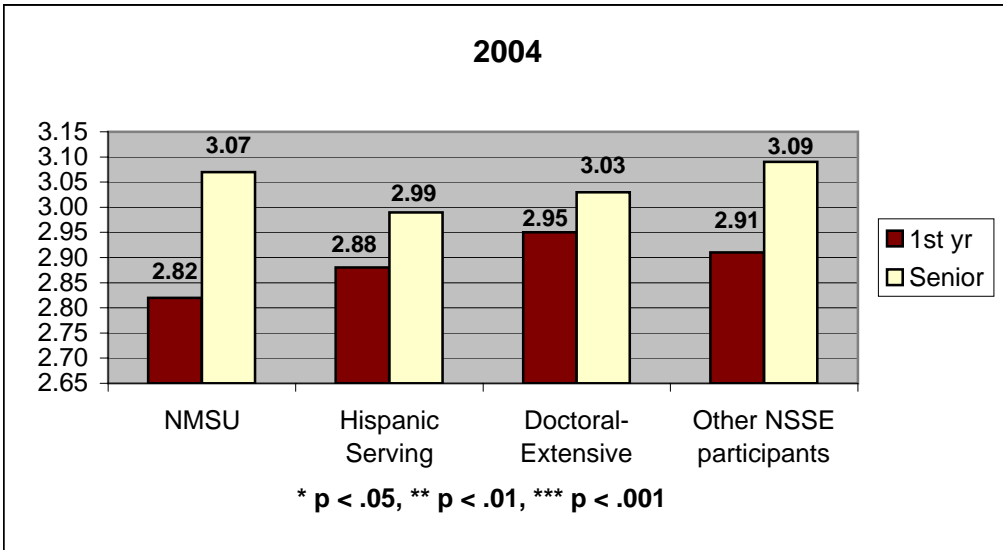
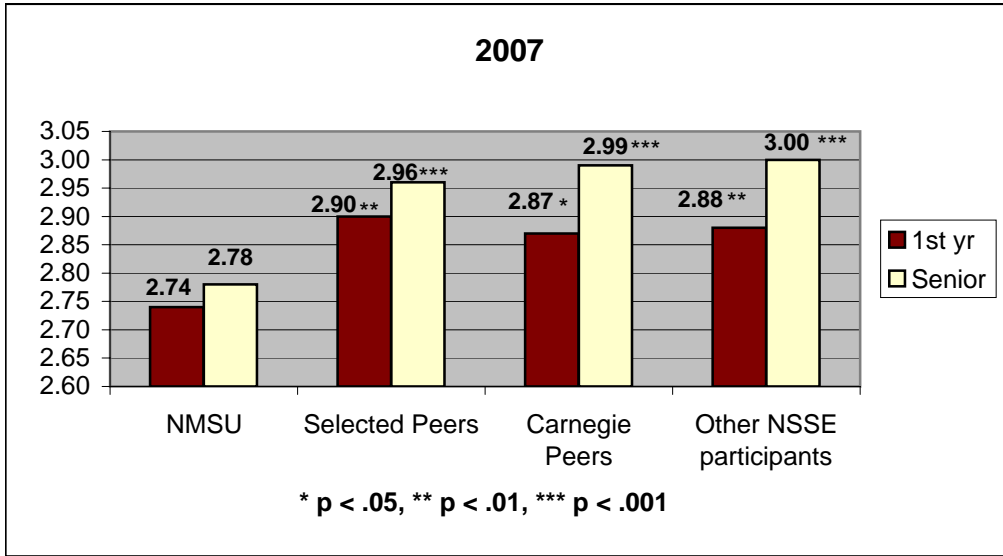
National Survey of Student Engagement

11. Educational and Personal Growth

To what extent has your experience at this institution contributed to your knowledge, skills, and personal development in the following areas?

1 = very little, 2 = some, 3 = quite a bit, 4 = very much

Learning effectively on your own:



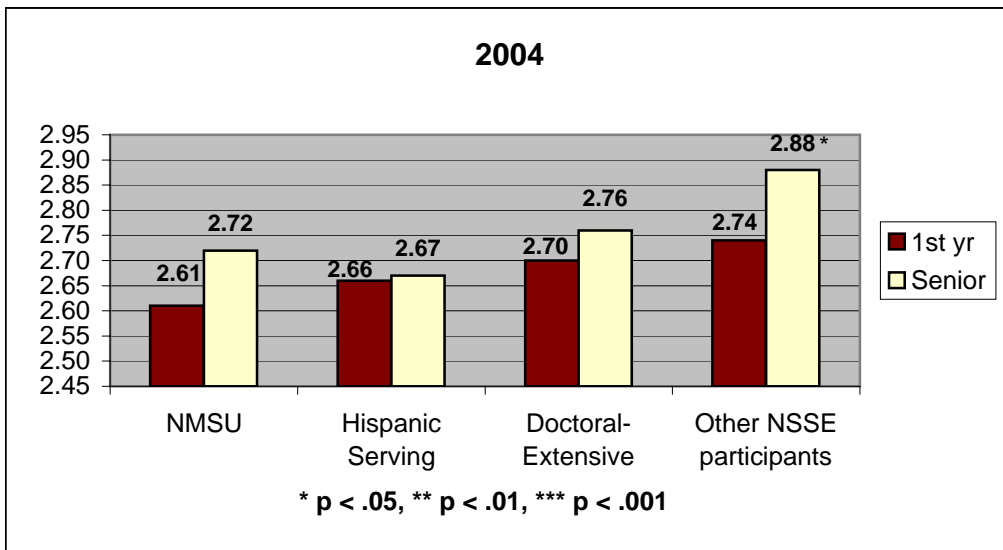
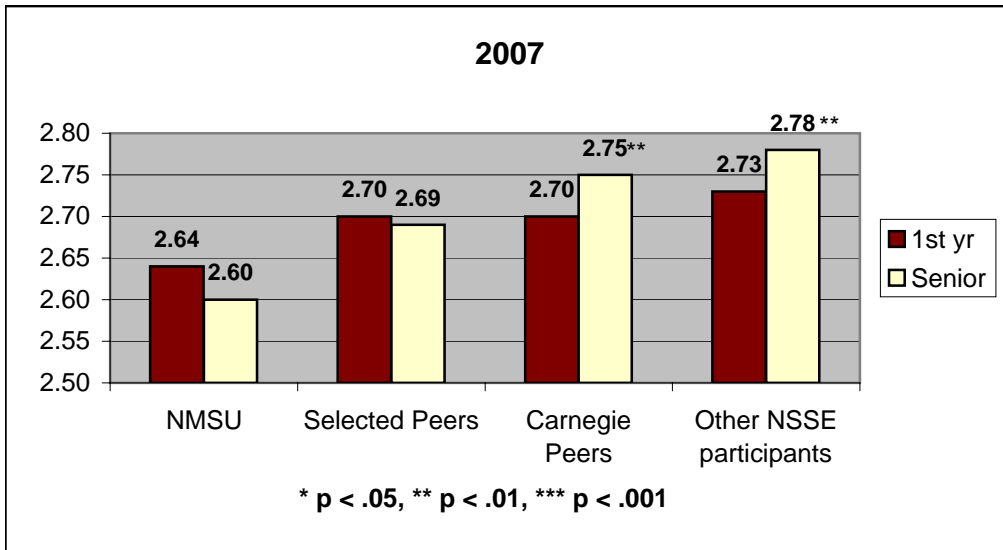
National Survey of Student Engagement

11. Educational and Personal Growth

To what extent has your experience at this institution contributed to your knowledge, skills, and personal development in the following areas?

1 = very little, 2 = some, 3 = quite a bit, 4 = very much

Understanding yourself:



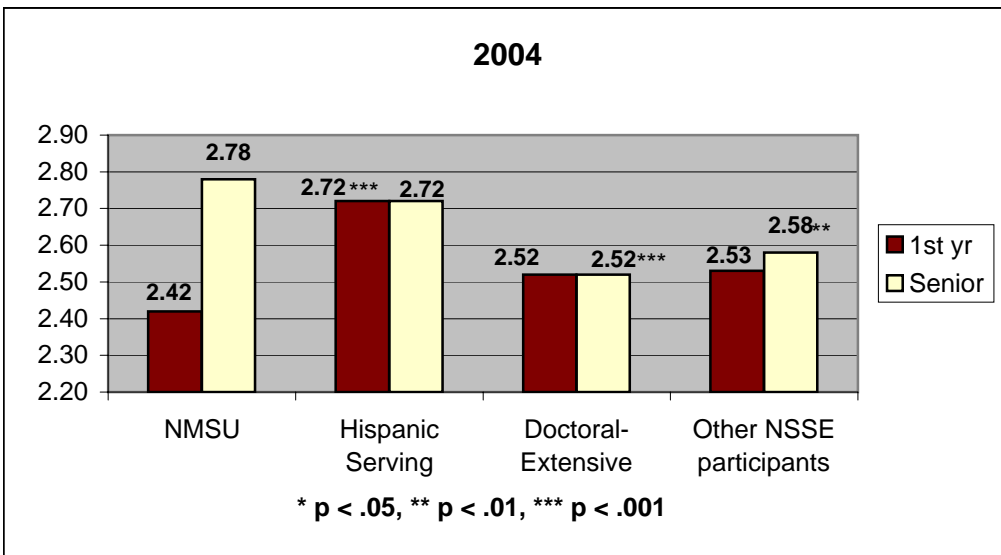
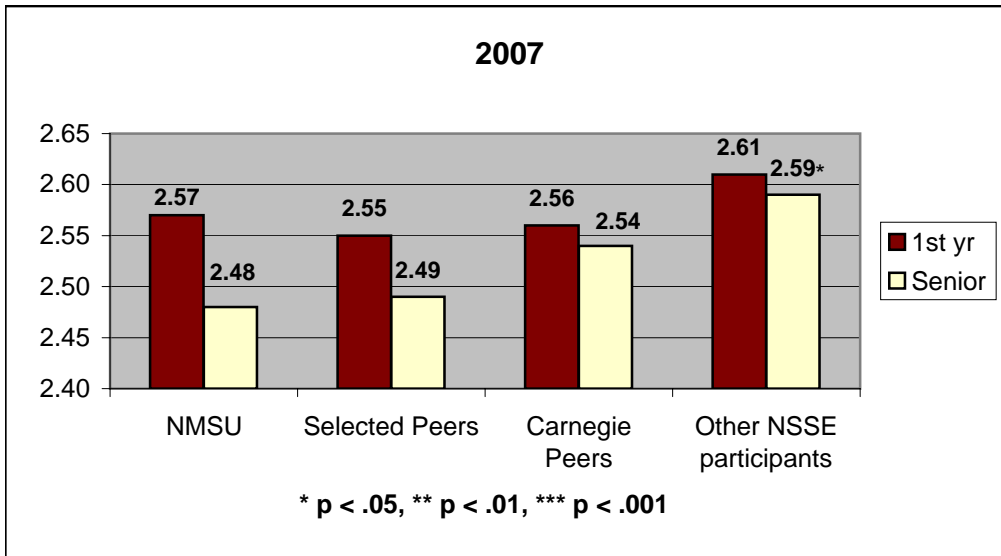
National Survey of Student Engagement

11. Educational and Personal Growth

To what extent has your experience at this institution contributed to your knowledge, skills, and personal development in the following areas?

1 = very little, 2 = some, 3 = quite a bit, 4 = very much

Understanding people of other racial and ethnic backgrounds:



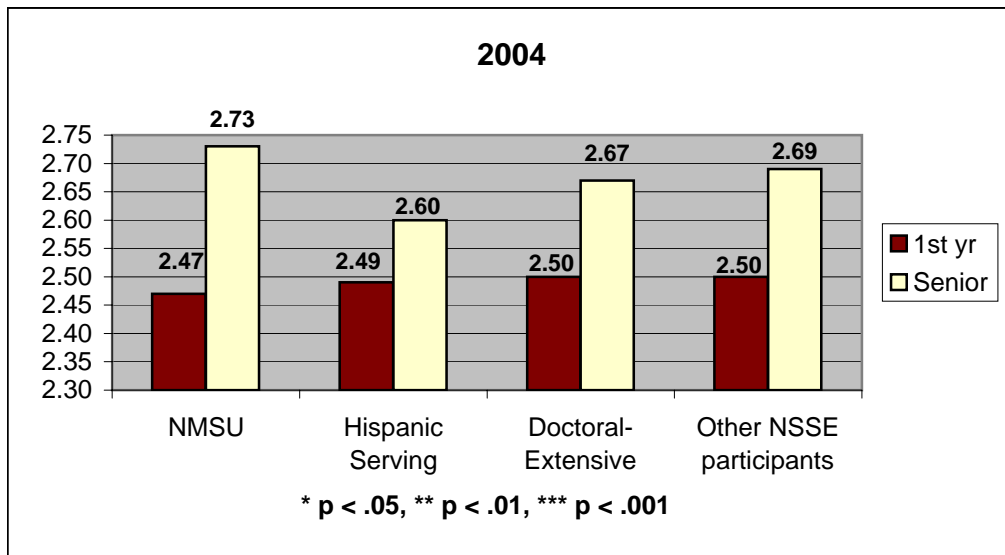
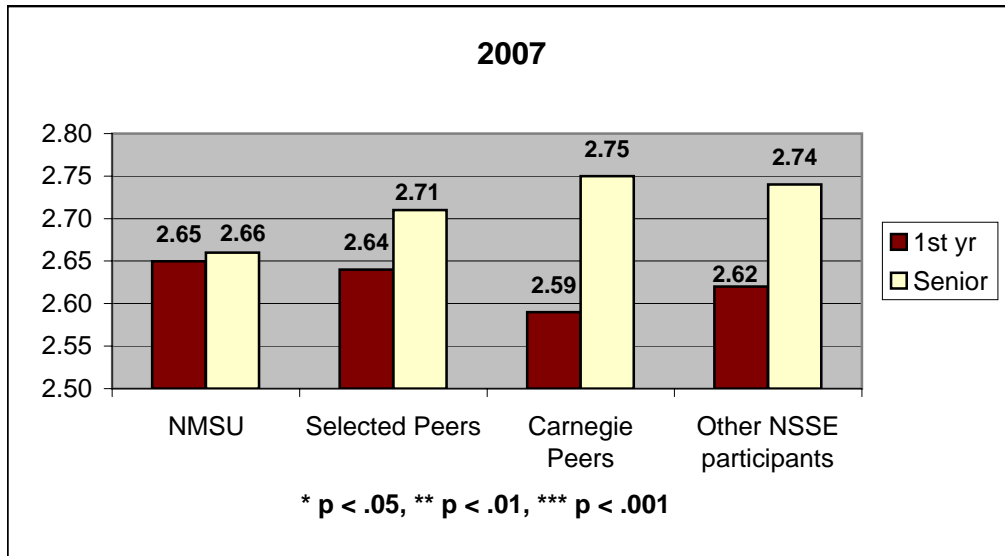
National Survey of Student Engagement

11. Educational and Personal Growth

To what extent has your experience at this institution contributed to your knowledge, skills, and personal development in the following areas?

1 = very little, 2 = some, 3 = quite a bit, 4 = very much

Solving complex real-world problems:



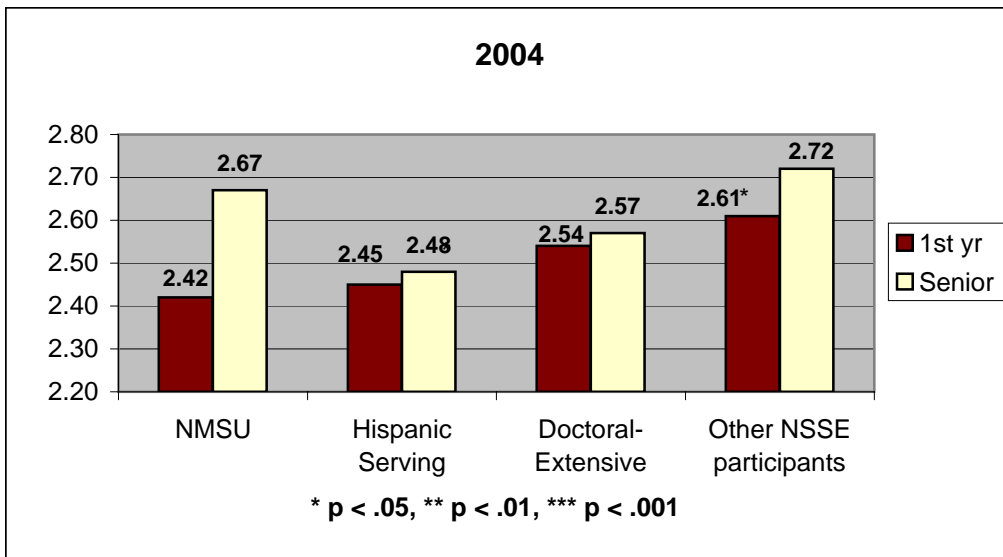
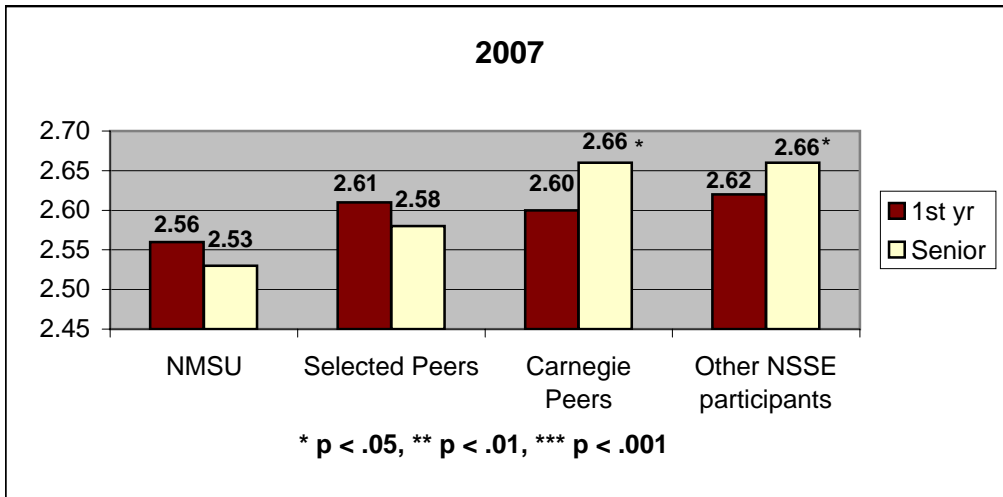
National Survey of Student Engagement

11. Educational and Personal Growth

To what extent has your experience at this institution contributed to your knowledge, skills, and personal development in the following areas?

1 = very little, 2 = some, 3 = quite a bit, 4 = very much

Developing a personal code of values and ethics:



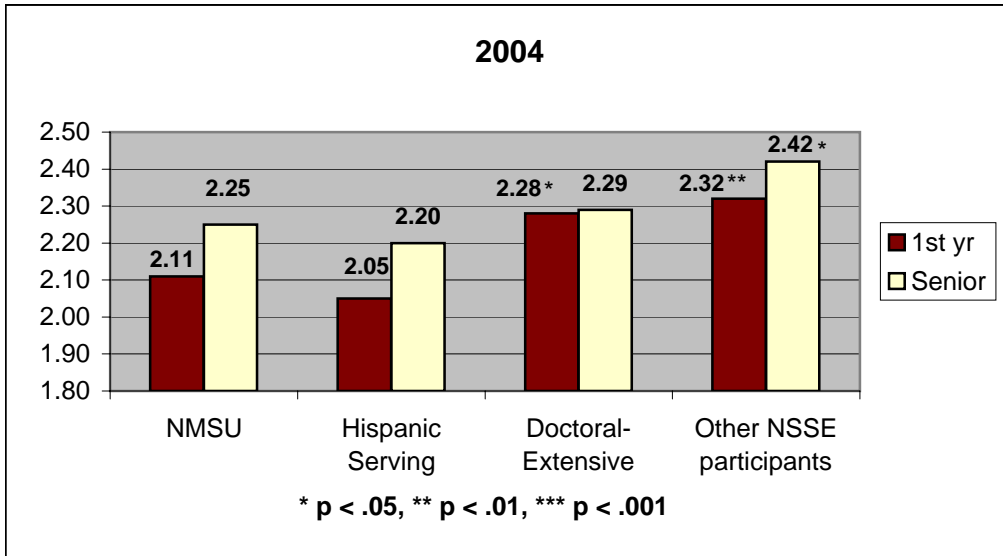
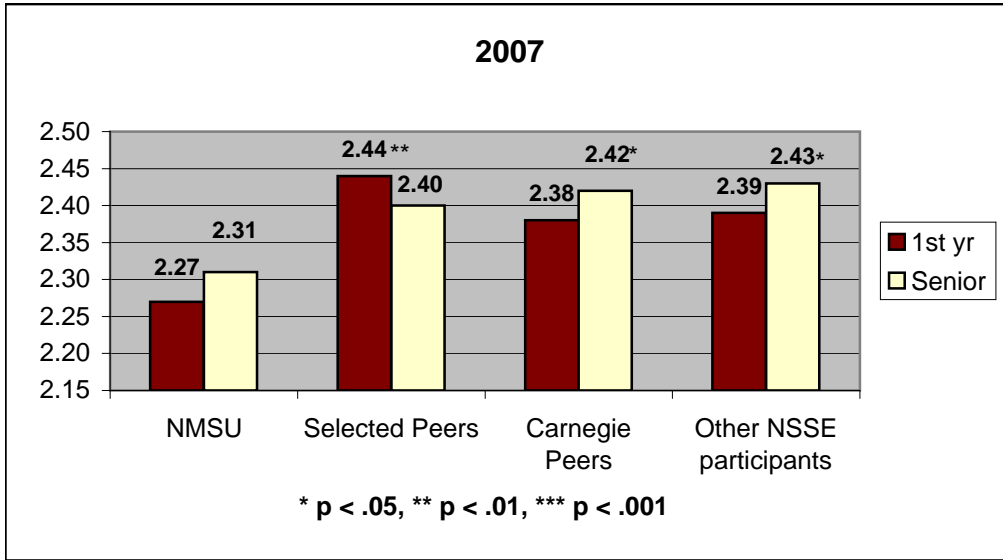
National Survey of Student Engagement

11. Educational and Personal Growth

To what extent has your experience at this institution contributed to your knowledge, skills, and personal development in the following areas?

1 = very little, 2 = some, 3 = quite a bit, 4 = very much

Contributing to the welfare of your community:



National Survey of Student Engagement

11. Educational and Personal Growth

To what extent has your experience at this institution contributed to your knowledge, skills, and personal development in the following areas?

1 = very little, 2 = some, 3 = quite a bit, 4 = very much

Developing a deepened sense of spirituality:

