

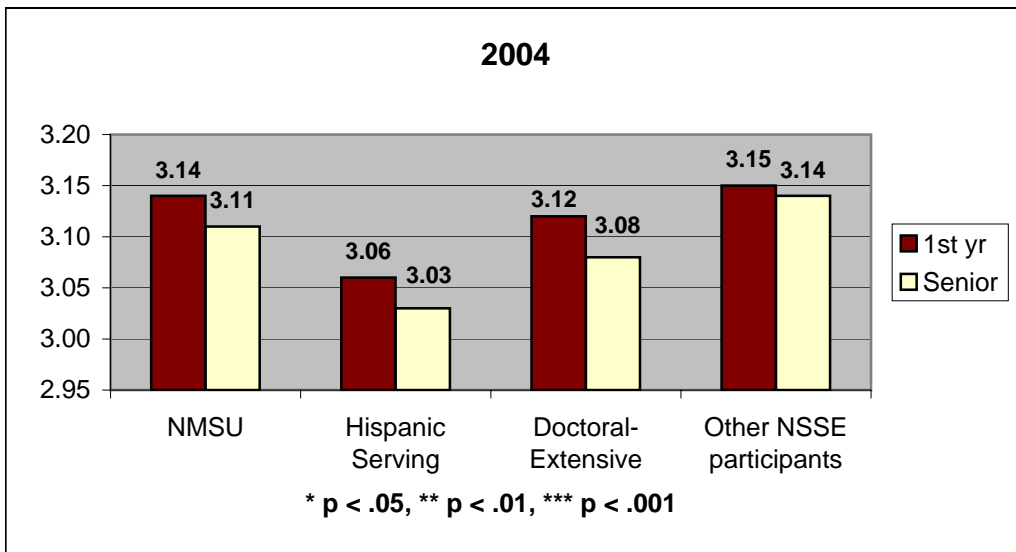
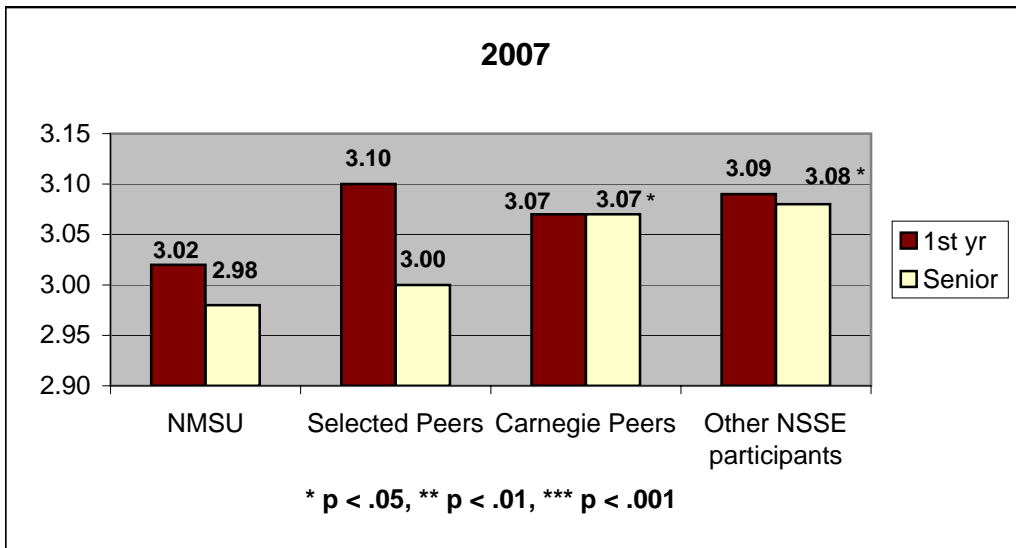
## National Survey of Student Engagement

### 10. Institutional Environment

To what extent does your institution emphasize each of the following?

**1 = very little, 2 = some, 3 = quite a bit, 4 = very much**

*Spending significant amounts of time studying and on academic work:*



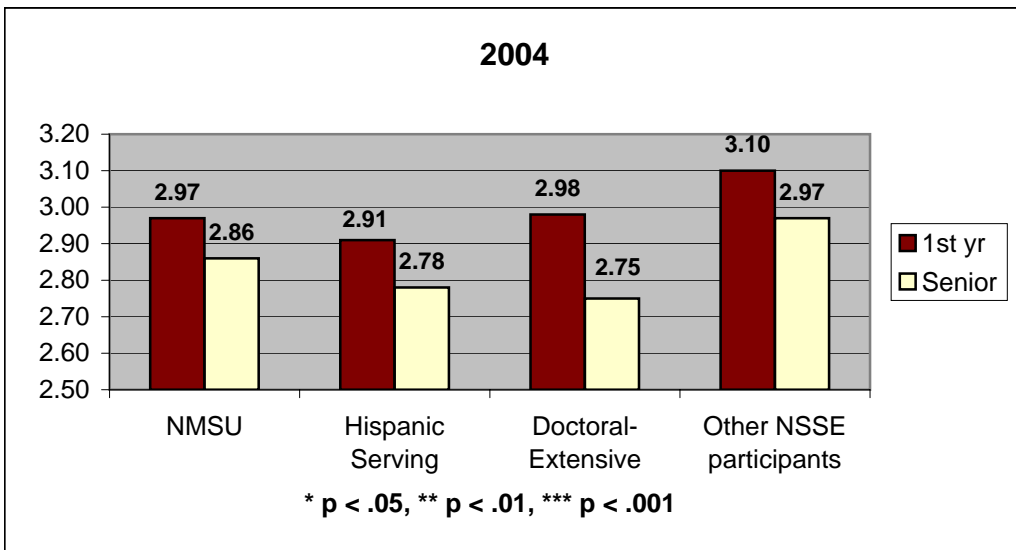
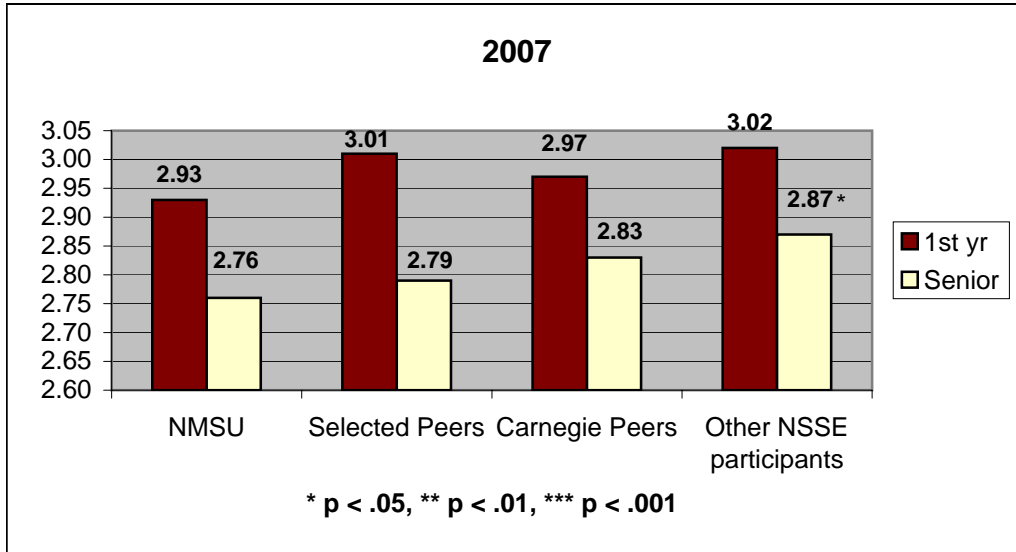
## National Survey of Student Engagement

### 10. Institutional Environment

To what extent does your institution emphasize each of the following?

**1 = very little, 2 = some, 3 = quite a bit, 4 = very much**

*Providing the support you need to help you succeed academically:*



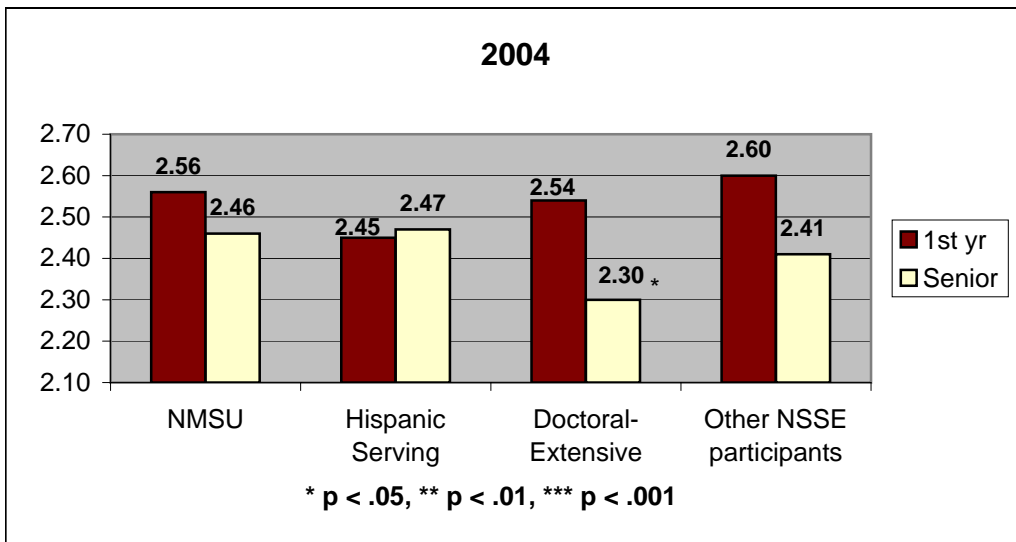
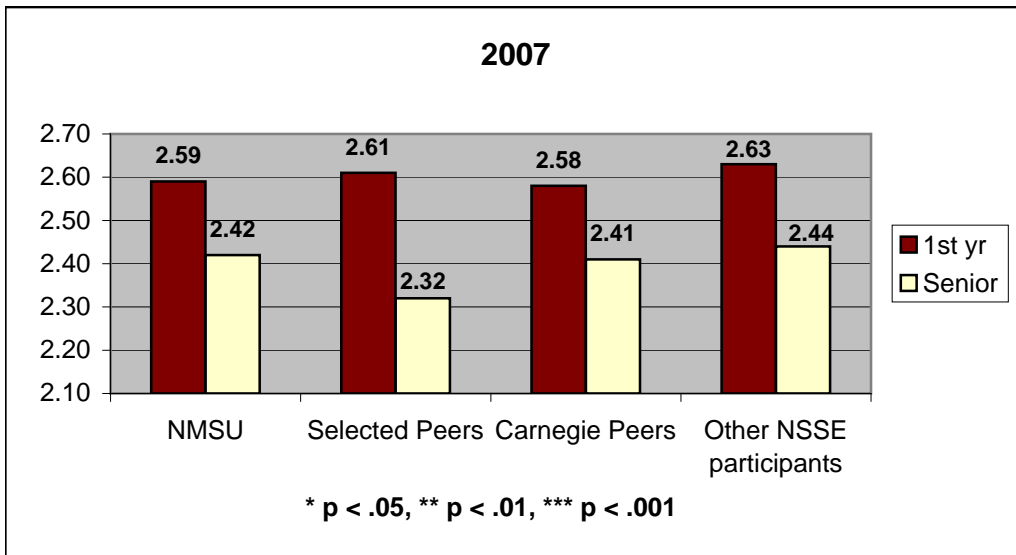
## National Survey of Student Engagement

### 10. Institutional Environment

To what extent does your institution emphasize each of the following?

1 = very little, 2 = some, 3 = quite a bit, 4 = very much

*Encouraging contact among students from different economic, social, and racial or ethnic backgrounds:*



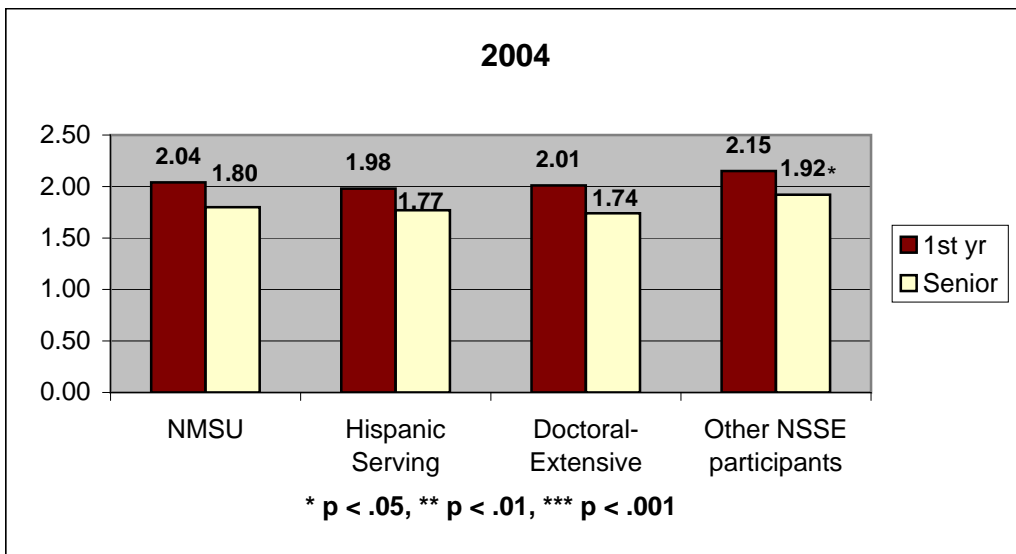
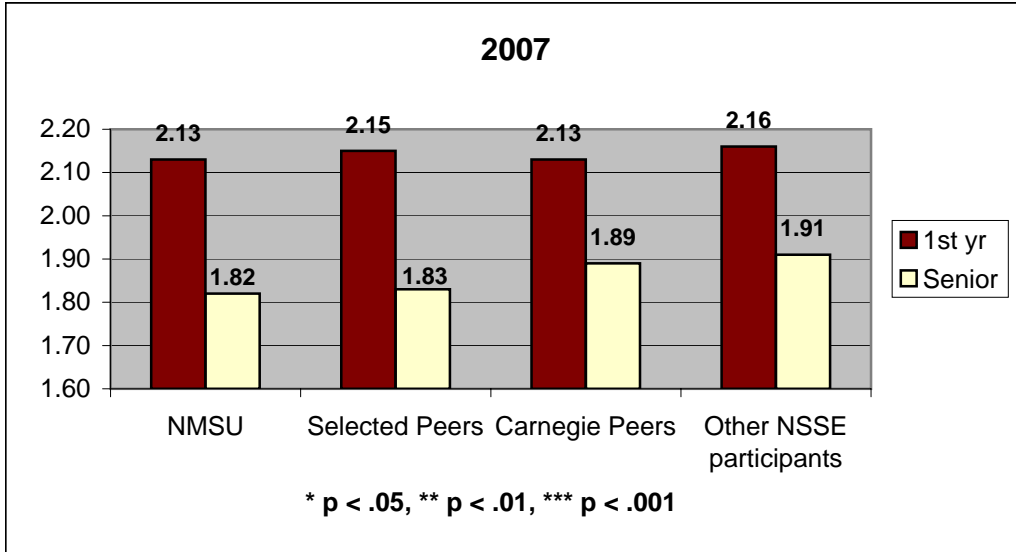
## National Survey of Student Engagement

### 10. Institutional Environment

To what extent does your institution emphasize each of the following?

**1 = very little, 2 = some, 3 = quite a bit, 4 = very much**

*Helping you cope with your non-academic responsibilities (work, family, etc.):*



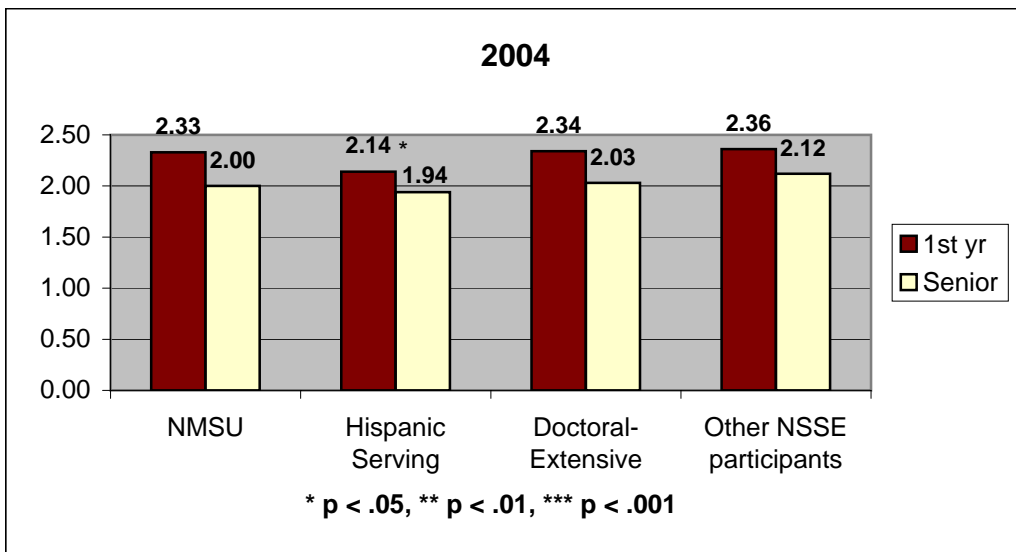
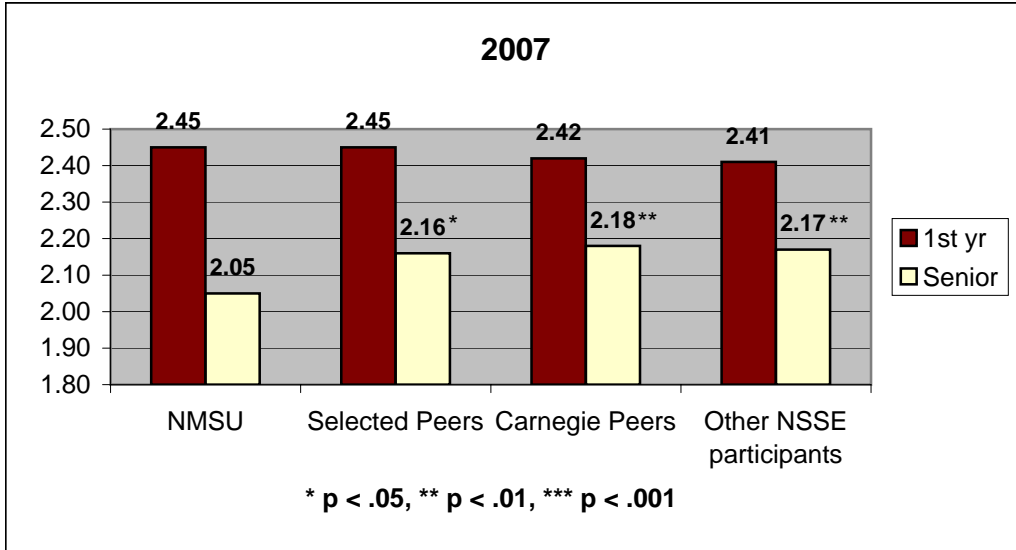
## National Survey of Student Engagement

### 10. Institutional Environment

To what extent does your institution emphasize each of the following?

1 = *very little*, 2 = *some*, 3 = *quite a bit*, 4 = *very much*

*Providing the support you need to thrive socially:*



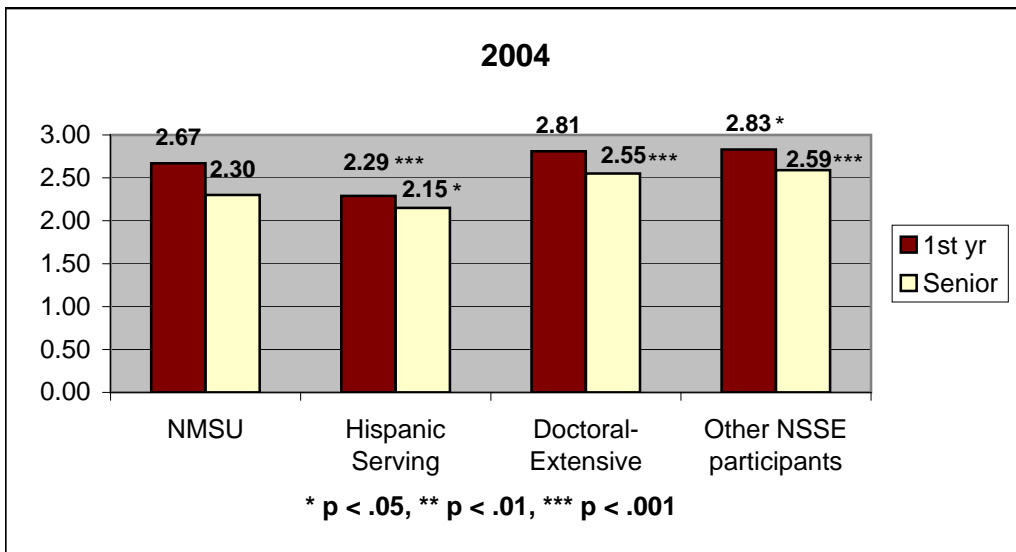
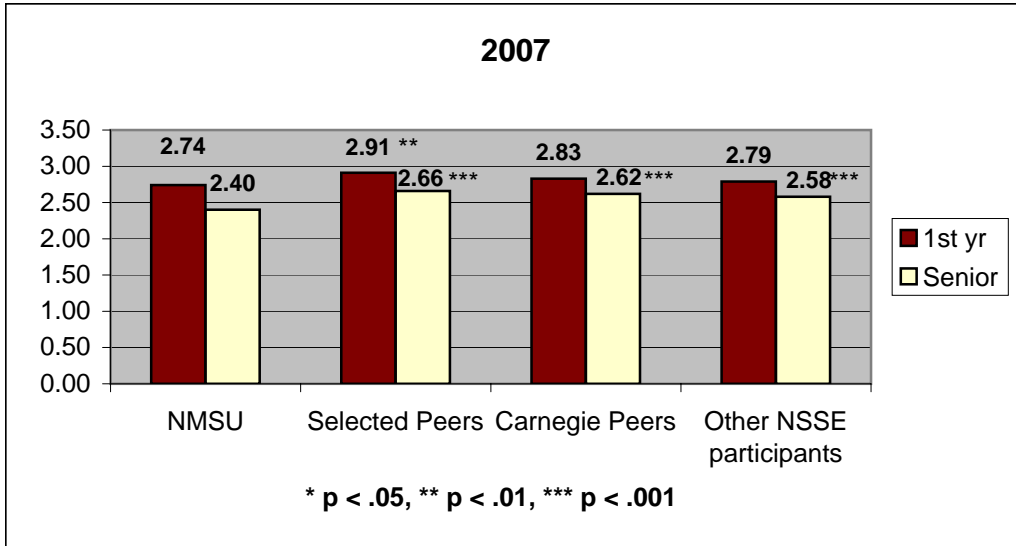
## National Survey of Student Engagement

### 10. Institutional Environment

To what extent does your institution emphasize each of the following?

1 = *very little*, 2 = *some*, 3 = *quite a bit*, 4 = *very much*

*Attending campus events and activities (special speakers, cultural performances, athletic events, etc.):*



## National Survey of Student Engagement

### 10. Institutional Environment

To what extent does your institution emphasize each of the following?

1 = *very little*, 2 = *some*, 3 = *quite a bit*, 4 = *very much*

*Using computers in academic work:*

